

For Research Use Only

# LYL1 Polyclonal antibody, PBS Only

Catalog Number: 15946-1-PBS



## Basic Information

<b>Catalog Number:</b> 15946-1-PBS	<b>GenBank Accession Number:</b> BC002796	<b>Purification Method:</b> Antigen affinity purification
<b>Size:</b> 100ug , Concentration: 1 mg/ml by Nanodrop;	<b>GeneID (NCBI):</b> 4066	
<b>Source:</b> Rabbit	<b>UNIPROT ID:</b> P12980	
<b>Isotype:</b> IgG	<b>Full Name:</b> Lymphoblastic leukemia derived sequence 1	
<b>Immunogen Catalog Number:</b> AG8528	<b>Calculated MW:</b> 30 kDa	
	<b>Observed MW:</b> 35-40 kDa	

## Applications

**Tested Applications:**  
IP, Indirect ELISA

**Species Specificity:**  
human

## Background Information

Lymphoblastic leukemia1 (LYL1) is a proto-oncogenic transcription factor found upregulated in patients with T-cell acute lymphoblastic leukemia (T-cell ALL). LYL1 has an important role in hematopoietic stem cell biology, normal hematopoiesis and leukemia. It is expressed throughout the hematopoietic lineages with the exception of T-cells. LYL1 shows two bands in the WB detection, where the upper band is the phosphorylated form and the lower band is the non-phosphorylated form (PMID: 10023675, PMID: 20844761).

## Storage

**Storage:**  
Store at -80°C.

**Storage Buffer:**  
PBS Only

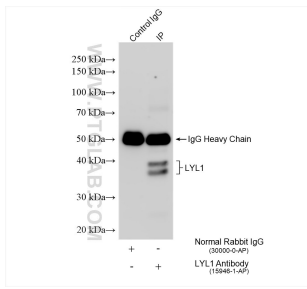
For technical support and original validation data for this product please contact:

T: 1 (888) 4PTGLAB (1-888-478-4522) (toll free in USA), or 1(312) 455-8498 (outside USA)

E: [proteintech@ptglab.com](mailto:proteintech@ptglab.com)  
W: [ptglab.com](http://ptglab.com)

**This product is exclusively available under Proteintech Group brand and is not available to purchase from any other manufacturer.**

## Selected Validation Data



IP result of anti-LYL1 (IP:15946-1-AP, 4ug;  
Detection:15946-1-AP 1:500) with K-562 cells  
lysate 1800 ug. This data was developed using the  
same antibody clone with 15946-1-PBS in a  
different storage buffer formulation.