

For Research Use Only

# MAT2B Polyclonal antibody

Catalog Number: 15952-1-AP

24 Publications



## Basic Information

### Catalog Number:

15952-1-AP

### Size:

150ul, Concentration: 800 ug/ml by Nanodrop;

### Source:

Rabbit

### Isotype:

IgG

### Immunogen Catalog Number:

AG8649

### GenBank Accession Number:

BC005218

### GeneID (NCBI):

27430

### UNIPROT ID:

Q9NZL9

### Full Name:

methionine adenosyltransferase II, beta

### Calculated MW:

36 kDa, 38 kDa

### Observed MW:

38 kDa

### Purification Method:

Antigen affinity purification

### Recommended Dilutions:

WB 1:500-1:3000

IP 0.5-4.0 ug for 1.0-3.0 mg of total protein lysate

IHC 1:20-1:200

IF/ICC 1:10-1:100

## Applications

### Tested Applications:

WB, IHC, IF/ICC, IP, ELISA

### Cited Applications:

WB, IHC

### Species Specificity:

human, mouse, rat

### Cited Species:

human, mouse, rat, pig, chicken

**Note-IHC: suggested antigen retrieval with TE buffer pH 9.0; (\*) Alternatively, antigen retrieval may be performed with citrate buffer pH 6.0**

### Positive Controls:

**WB** : HepG2 cells, HEK-293 cells, Jurkat cells, mouse brain tissue, mouse testis tissue

**IP** : HepG2 cells,

**IHC** : human lung tissue, mouse lung tissue, human kidney tissue

**IF/ICC** : HepG2 cells,

## Notable Publications

Author	Pubmed ID	Journal	Application
Yimin Jia	27648945	J Agric Food Chem	WB
Demin Cai	27763549	Nutrients	WB
Xi Li	25410747	Eur J Nutr	WB

## Storage

### Storage:

Store at -20°C. Stable for one year after shipment.

### Storage Buffer:

PBS with 0.02% sodium azide and 50% glycerol pH 7.3.

Aliquoting is unnecessary for -20°C storage

\*\*\* 20ul sizes contain 0.1% BSA

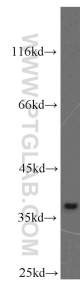
For technical support and original validation data for this product please contact:

T: 1 (888) 4PTGLAB (1-888-478-4522) (toll free in USA), or 1(312) 455-8498 (outside USA)

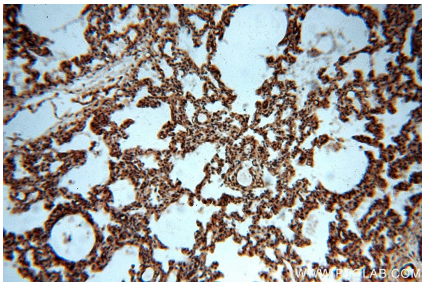
E: [proteintech@ptglab.com](mailto:proteintech@ptglab.com)  
W: [ptglab.com](http://ptglab.com)

This product is exclusively available under Proteintech Group brand and is not available to purchase from any other manufacturer.

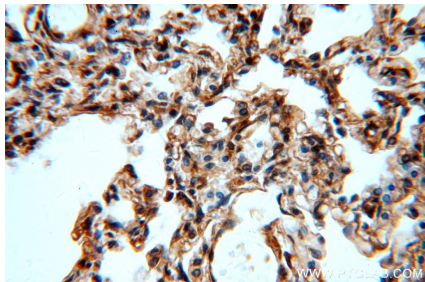
Selected Validation Data



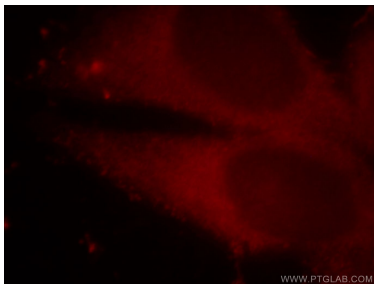
HepG2 cells were subjected to SDS PAGE followed by western blot with 15952-1-AP (MAT2B antibody) at dilution of 1:800 incubated at room temperature for 1.5 hours.



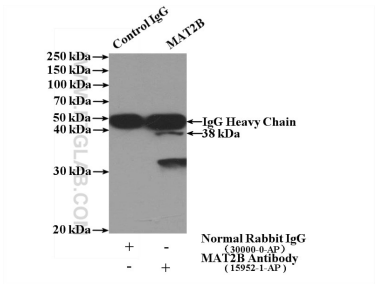
Immunohistochemical analysis of paraffin-embedded human lung using 15952-1-AP (MAT2B antibody) at dilution of 1:100 (under 10x lens).



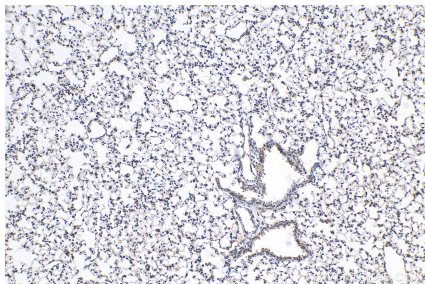
Immunohistochemical analysis of paraffin-embedded human lung using 15952-1-AP (MAT2B antibody) at dilution of 1:100 (under 40x lens).



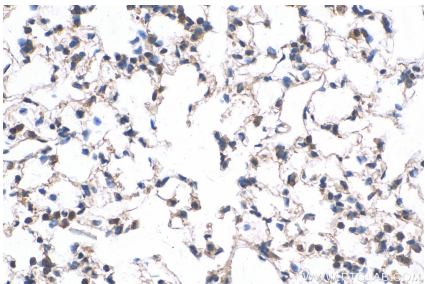
Immunofluorescent analysis of HepG2 cells, using MAT2B antibody 15952-1-AP at 1:25 dilution and Rhodamine-labeled goat anti-rabbit IgG (red).



IP result of anti-MAT2B (IP:15952-1-AP, 4ug; Detection:15952-1-AP 1:500) with HepG2 cells lysate 1000ug.



Immunohistochemical analysis of paraffin-embedded mouse lung tissue slide using 15952-1-AP (MAT2B antibody) at dilution of 1:400 (under 10x lens). Heat mediated antigen retrieval with Tris-EDTA buffer (pH 9.0).



Immunohistochemical analysis of paraffin-embedded mouse lung tissue slide using 15952-1-AP (MAT2B antibody) at dilution of 1:400 (under 40x lens). Heat mediated antigen retrieval with Tris-EDTA buffer (pH 9.0).