

For Research Use Only

SEC24A Polyclonal antibody

Catalog Number: 15958-1-AP

Featured Product

13 Publications



Basic Information

Catalog Number:

15958-1-AP

Size:

150ul, Concentration: 450 ug/ml by Nanodrop;

Source:

Rabbit

Isotype:

IgG

Immunogen Catalog Number:

AG8723

GenBank Accession Number:

BC019341

GeneID (NCBI):

10802

UNIPROT ID:

O95486

Full Name:

SEC24 family, member A (S. cerevisiae)

Calculated MW:

613 aa, 66 kDa

Observed MW:

66 kDa, 120 kDa

Purification Method:

Antigen affinity purification

Recommended Dilutions:

WB 1:500-1:3000

IHC 1:20-1:200

Applications

Tested Applications:

WB, IHC, ELISA

Cited Applications:

WB, IHC, IF, IP

Species Specificity:

human, mouse, rat, monkey

Cited Species:

human, mouse, rat

Note-IHC: suggested antigen retrieval with TE buffer pH 9.0; (*) Alternatively, antigen retrieval may be performed with citrate buffer pH 6.0

Positive Controls:

WB: COS-7 cells, HeLa cells, human liver tissue, mouse skeletal muscle tissue, mouse thymus tissue, rat thymus tissue, HEK-293 cells, HepG2 cells, NIH/3T3 cells

IHC: human lymphoma tissue,

Background Information

COP1-coated vesicles mediate anterograde transport from the ER to the Golgi apparatus. COP1 is composed of three parts: two coat protein complexes (Sec23/24 complex and Sec13/31 complex) and one small GTP-binding protein, Sar1 (PMID: 9568718). Sec24 subunit of the coat complex has been implicated in cargo recognition (PMID: 17316621). In mammal cells there are four Sec24 isoforms, termed Sec24A, Sec24B, Sec24C, and Sec24D (PMID: 10329445). Two isoforms of 120 kDa and 66 kDa produced by alternative splicing have been described.

Notable Publications

Author	Pubmed ID	Journal	Application
Colin T Stomberski	36288700	Cell Rep	WB
Mengyue You	36252341	Redox Biol	WB,IF
Helene Möllerherm	28553287	Front Immunol	WB

Storage

Storage:

Store at -20°C. Stable for one year after shipment.

Storage Buffer:

PBS with 0.02% sodium azide and 50% glycerol pH 7.3.

Aliquoting is unnecessary for -20°C storage

*** 20ul sizes contain 0.1% BSA

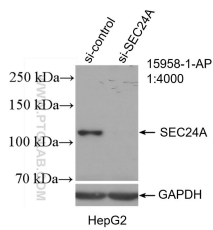
For technical support and original validation data for this product please contact:

T: 1 (888) 4PTGLAB (1-888-478-4522) (toll free in USA), or 1(312) 455-8498 (outside USA)

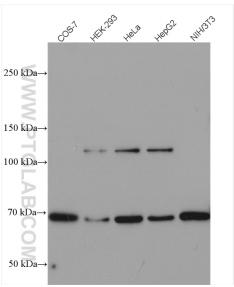
E: proteintech@ptglab.com
W: ptglab.com

This product is exclusively available under Proteintech Group brand and is not available to purchase from any other manufacturer.

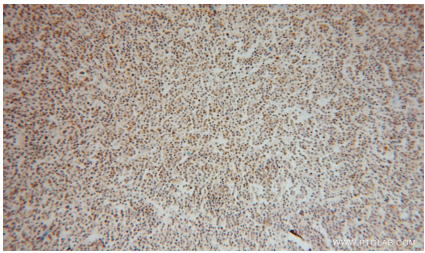
Selected Validation Data



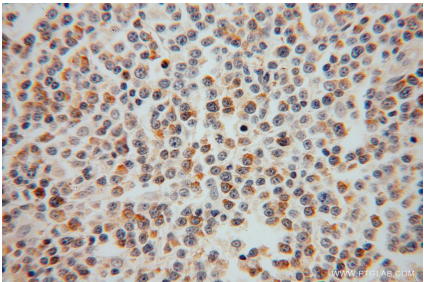
WB result of SEC24A antibody (15958-1-AP; 1:4000; incubated at room temperature for 1.5 hours) with sh-Control and sh-SEC24A transfected HepG2 cells.



Various lysates were subjected to SDS PAGE followed by western blot with 15958-1-AP (SEC24A antibody) at dilution of 1:1500 incubated at room temperature for 1.5 hours.



Immunohistochemical analysis of paraffin-embedded human lymphoma using 15958-1-AP (SEC24A antibody) at dilution of 1:50 (under 10x lens).



Immunohistochemical analysis of paraffin-embedded human lymphoma using 15958-1-AP (SEC24A antibody) at dilution of 1:50 (under 40x lens).