

For Research Use Only

Elafin/Skalp Polyclonal antibody

Catalog Number: 15963-1-AP

4 Publications



Basic Information

Catalog Number:

15963-1-AP

Size:

150ul, Concentration: 700 ug/ml by Nanodrop and 340 ug/ml by Bradford method using BSA as the standard;

Source:

Rabbit

Isotype:

IgG

Immunogen Catalog Number:

AG8735

GenBank Accession Number:

BC010952

GeneID (NCBI):

5266

UNIPROT ID:

P19957

Full Name:

peptidase inhibitor 3, skin-derived

Calculated MW:

117 aa, 12 kDa

Purification Method:

Antigen affinity purification

Recommended Dilutions:

IHC 1:20-1:200

IF/ICC 1:10-1:100

Applications

Tested Applications:

IHC, IF/ICC, ELISA

Cited Applications:

IHC

Species Specificity:

human

Cited Species:

human, pig

Note-IHC: suggested antigen retrieval with TE buffer pH 9.0; (*) Alternatively, antigen retrieval may be performed with citrate buffer pH 6.0

Positive Controls:

IHC : human skin cancer tissue, human oesophagus tissue, human oesophagus cancer tissue

IF/ICC : HeLa cells,

Notable Publications

Author	Pubmed ID	Journal	Application
Wenfang Wang	35082524	Int J Gen Med	IHC
Chengming Liu	33889215	Ther Adv Med Oncol	IHC
Soohyung Lee	36915938	Anim Biosci	IHC

Storage

Storage:

Store at -20°C. Stable for one year after shipment.

Storage Buffer:

PBS with 0.02% sodium azide and 50% glycerol pH 7.3.

Aliquoting is unnecessary for -20°C storage

*** 20ul sizes contain 0.1% BSA

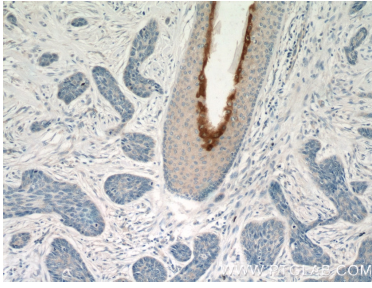
For technical support and original validation data for this product please contact:

T: 1 (888) 4PTGLAB (1-888-478-4522) (toll free in USA), or 1(312) 455-8498 (outside USA)

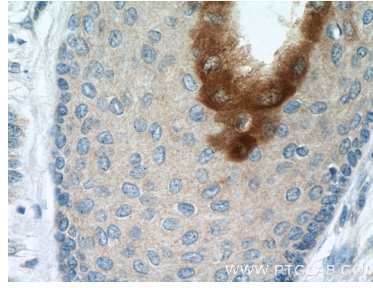
E: proteintech@ptglab.com
W: ptglab.com

This product is exclusively available under Proteintech Group brand and is not available to purchase from any other manufacturer.

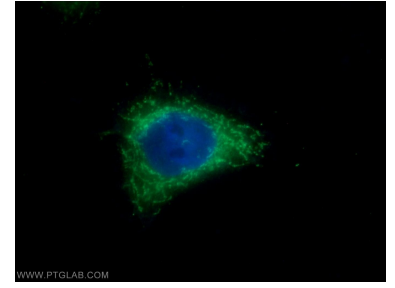
Selected Validation Data



Immunohistochemical analysis of paraffin-embedded human skin cancer tissue slide using 15963-1-AP (Elafin/Skalp antibody) at dilution of 1:50 (under 10x lens).



Immunohistochemical analysis of paraffin-embedded human skin cancer tissue slide using 15963-1-AP (Elafin/Skalp antibody) at dilution of 1:50 (under 40x lens).



Immunofluorescent analysis of HeLa cells using 15963-1-AP (Elafin/Skalp antibody) at dilution of 1:25 and Alexa Fluor 488-conjugated Goat Anti-Rabbit IgG(H+L).