

For Research Use Only

ERp57/ERp60 Polyclonal antibody

Catalog Number: 15967-1-AP

Featured Product

42 Publications



Basic Information

Catalog Number:

15967-1-AP

Size:

150ul, Concentration: 650 ug/ml by Nanodrop;

Source:

Rabbit

Isotype:

IgG

Immunogen Catalog Number:

AG8741

GenBank Accession Number:

BC014433

GeneID (NCBI):

2923

UNIPROT ID:

P30101

Full Name:

protein disulfide isomerase family A, member 3

Calculated MW:

505 aa, 57 kDa

Observed MW:

57 kDa

Purification Method:

Antigen affinity purification

Recommended Dilutions:

WB 1:2000-1:16000

IP 0.5-4.0 ug for 1.0-3.0 mg of total protein lysate

IHC 1:50-1:500

IF/ICC 1:400-1:2000

Applications

Tested Applications:

WB, IHC, IF/ICC, IP, ELISA

Cited Applications:

WB, IHC, IF, IP, CoIP, ELISA

Species Specificity:

human, mouse, rat

Cited Species:

human, mouse, rat, pig

Note-IHC: suggested antigen retrieval with TE buffer pH 9.0; (*) Alternatively, antigen retrieval may be performed with citrate buffer pH 6.0

Positive Controls:

WB: A375 cells, L02 cells, mouse liver tissue, rat liver tissue

IP: mouse liver tissue,

IHC: human lung cancer tissue,

IF/ICC: HepG2 cells,

Background Information

PDIA3, also named as P58, ER60, ERp57, ERp60, ERp61, GRP57, GRP58 and PI-PLC, is a member of the PDI family, participates in the oxidation, reduction, and isomerization of disulfide bonds for correct folding of secretory proteins before modification and transport in the endoplasmic reticulum. It is associated with apoptosis or inhibition of cancer cell growth. PDIA3 was once thought to be a phospholipase; however, it has been demonstrated that this protein actually has protein disulfide isomerase activity. It is thought that complexes of lectins and PDIA3 mediate protein folding by promoting formation of disulfide bonds in their glycoprotein substrates.

Notable Publications

Author	Pubmed ID	Journal	Application
Jing Sun	34650437	Front Pharmacol	WB
Xin-Yu Guo	32967966	J Biol Chem	WB
Soma Samanta	29262583	Oncotarget	WB,IHC

Storage

Storage:

Store at -20°C. Stable for one year after shipment.

Storage Buffer:

PBS with 0.02% sodium azide and 50% glycerol pH 7.3.

Aliquoting is unnecessary for -20°C storage

*** 20ul sizes contain 0.1% BSA

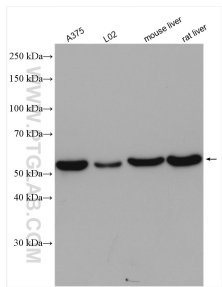
For technical support and original validation data for this product please contact:

T: 1 (888) 4PTGLAB (1-888-478-4522) (toll free in USA), or 1(312) 455-8498 (outside USA)

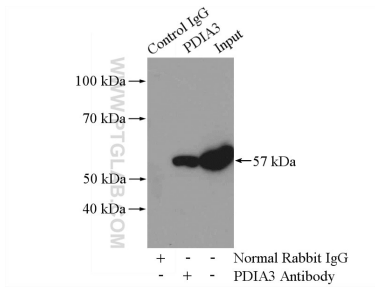
E: proteintech@ptglab.com
W: ptglab.com

This product is exclusively available under Proteintech Group brand and is not available to purchase from any other manufacturer.

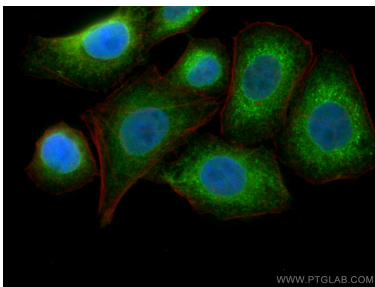
Selected Validation Data



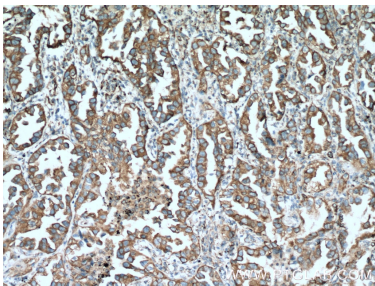
Various lysates were subjected to SDS PAGE followed by western blot with 15967-1-AP (ERp57/Erp60 antibody) at dilution of 1:8000 incubated at room temperature for 1.5 hours.



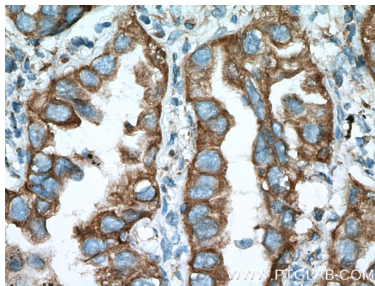
IP result of anti-ERp57/Erp60 (IP:15967-1-AP, 4ug; Detection:15967-1-AP 1:2000) with mouse liver tissue lysate 4000ug.



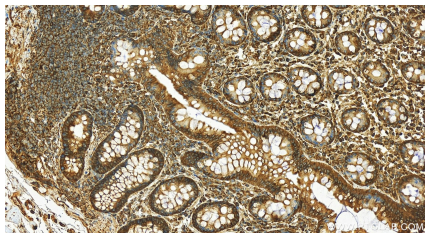
Immunofluorescent analysis of (4% PFA) fixed HepG2 cells using ERp57/Erp60 antibody (15967-1-AP) at dilution of 1:400 and CoraLite®488-Conjugated Goat Anti-Rabbit IgG(H+L), CL594-Phalloidin (red).



Immunohistochemical analysis of paraffin-embedded human lung cancer tissue slide using 15967-1-AP (ERp57/Erp60 antibody) at dilution of 1:200 (under 10x lens). Heat mediated antigen retrieval with Tris-EDTA buffer (pH 9.0).



Immunohistochemical analysis of paraffin-embedded human lung cancer tissue slide using 15967-1-AP (ERp57/Erp60 antibody) at dilution of 1:200 (under 40x lens). Heat mediated antigen retrieval with Tris-EDTA buffer (pH 9.0).



Immunohistochemical analysis of paraffin-embedded human colon tissue slide using 15967-1-AP (ERp57/Erp60 antibody) at dilution of 1:1600 (under 20x lens). Heat mediated antigen retrieval with Tris-EDTA buffer (pH 9.0).