

For Research Use Only

IMMP2L Polyclonal antibody

Catalog Number: 15970-1-AP **1 Publications**



Basic Information

| | | |
|--|---|---|
| Catalog Number: 15970-1-AP | GenBank Accession Number: BC008497 | Purification Method: Antigen affinity purification |
| Size: 150ul , Concentration: 650 µg/ml by Nanodrop and 347 µg/ml by Bradford method using BSA as the standard; | GeneID (NCBI): 83943 | Recommended Dilutions: WB 1:1000-1:4000 IHC 1:20-1:200 |
| Source: Rabbit | Full Name: IMP2 inner mitochondrial membrane peptidase-like (S. cerevisiae) | |
| Isotype: IgG | Calculated MW: 12 kDa, 20 kDa | |
| Immunogen Catalog Number: AG8752 | Observed MW: 12 kDa | |

Applications

| | |
|--|---|
| Tested Applications: IHC, WB, ELISA | Positive Controls: |
| Cited Applications: WB | WB : human kidney tissue, human heart tissue, mouse skeletal muscle tissue |
| Species Specificity: human, mouse, rat | IHC : human lung cancer tissue, |
| Cited Species: mouse | |
| Note-IHC: suggested antigen retrieval with TE buffer pH 9.0; (*) Alternatively, antigen retrieval may be performed with citrate buffer pH 6.0 | |

Background Information

Notable Publications

| Author | Pubmed ID | Journal | Application |
|---------|-----------|---------------|-------------|
| Qing He | 32652035 | Endocrinology | WB |

Storage

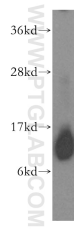
Storage:
Store at -20°C. Stable for one year after shipment.
Storage Buffer:
PBS with 0.02% sodium azide and 50% glycerol pH 7.3.
Aliquoting is unnecessary for -20°C storage

*** 20ul sizes contain 0.1% BSA

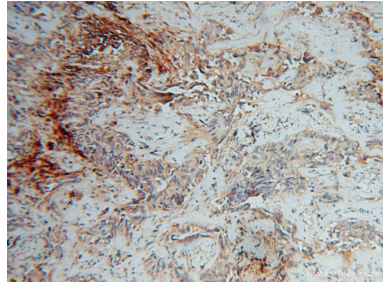
For technical support and original validation data for this product please contact:
T: 1 (888) 4PTGLAB (1-888-478-4522) (toll free in USA), or 1(312) 455-8498 (outside USA) E: proteintech@ptglab.com W: ptglab.com

This product is exclusively available under Proteintech Group brand and is not available to purchase from any other manufacturer.

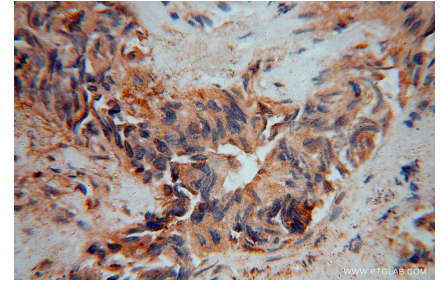
Selected Validation Data



human kidney tissue were subjected to SDS PAGE followed by western blot with 15970-1-AP (IMMP2L antibody) at dilution of 1:500 incubated at room temperature for 1.5 hours.



Immunohistochemical analysis of paraffin-embedded human lung cancer using 15970-1-AP (IMMP2L antibody) at dilution of 1:100 (under 10x lens).



Immunohistochemical analysis of paraffin-embedded human lung cancer using 15970-1-AP (IMMP2L antibody) at dilution of 1:100 (under 40x lens).