

For Research Use Only

PSMB10 Polyclonal antibody

Catalog Number: 15976-1-AP

5 Publications



Basic Information

Catalog Number:

15976-1-AP

Size:

150ul, Concentration: 500 ug/ml by Nanodrop;

Source:

Rabbit

Isotype:

IgG

Immunogen Catalog Number:

AG8764

GenBank Accession Number:

BC017198

GeneID (NCBI):

5699

UNIPROT ID:

P40306

Full Name:

proteasome (prosome, macropain) subunit, beta type, 10

Calculated MW:

273 aa, 29 kDa

Observed MW:

29 kDa

Purification Method:

Antigen affinity purification

Recommended Dilutions:

WB 1:500-1:2000

IHC 1:50-1:500

Applications

Tested Applications:

WB, IHC, ELISA

Cited Applications:

WB

Species Specificity:

human

Cited Species:

human

Positive Controls:

WB: Raji cells, human liver tissue

IHC: human liver cancer tissue,

Note-IHC: suggested antigen retrieval with TE buffer pH 9.0; (*) Alternatively, antigen retrieval may be performed with citrate buffer pH 6.0

Background Information

The proteasome subunit, beta type 10 (PSMB10) gene regulated by interferon-gamma is a core part of the 26S proteasome complex, which is an important protein degrading system. Study identifies immunosubunit PSMB10 as a novel regulator that contributes to Ang II-induced atrial fibrillation (AF) and suggests that inhibition of PSMB10 may represent a potential therapeutic target for treating hypertensive AF. (PMID: 29507100, PMID: 16965406)

Notable Publications

Author	Pubmed ID	Journal	Application
Xin Xie	35710020	Biochem Pharmacol	WB
Xin Xie	32595507	Front Pharmacol	WB
Han Gao	36580191	Metab Brain Dis	WB

Storage

Storage:

Store at -20°C. Stable for one year after shipment.

Storage Buffer:

PBS with 0.02% sodium azide and 50% glycerol pH 7.3.

Aliquoting is unnecessary for -20°C storage

*** 20ul sizes contain 0.1% BSA

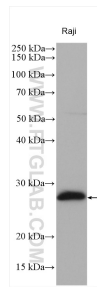
For technical support and original validation data for this product please contact:

T: 1 (888) 4PTGLAB (1-888-478-4522) (toll free in USA), or 1(312) 455-8498 (outside USA)

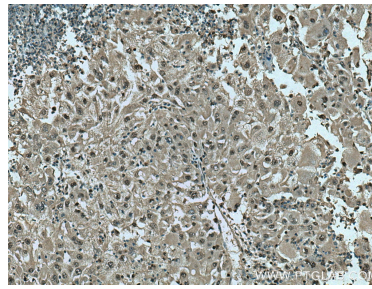
E: proteintech@ptglab.com
W: ptglab.com

This product is exclusively available under Proteintech Group brand and is not available to purchase from any other manufacturer.

Selected Validation Data



Raji cells were subjected to SDS PAGE followed by western blot with 15976-1-AP (PSMB10 antibody) at dilution of 1:1000 incubated at room temperature for 1.5 hours.



Immunohistochemical analysis of paraffin-embedded human liver cancer tissue slide using 15976-1-AP (PSMB10 antibody) at dilution of 1:200 (under 10x lens). Heat mediated antigen retrieval with Tris-EDTA buffer (pH 9.0).