

For Research Use Only

# SFXN2 Polyclonal antibody

Catalog Number: 15985-1-AP



## Basic Information

**Catalog Number:**

15985-1-AP

**Size:**

150ul , Concentration: 300 ug/ml by Nanodrop and 220 ug/ml by Bradford method using BSA as the standard;

**Source:**

Rabbit

**Isotype:**

IgG

**Immunogen Catalog Number:**

AG8788

**GenBank Accession Number:**

BC022091

**GeneID (NCBI):**

118980

**UNIPROT ID:**

Q96NB2

**Full Name:**

sideroflexin 2

**Calculated MW:**

322 aa, 36 kDa

**Purification Method:**

Antigen affinity purification

**Recommended Dilutions:**

IHC 1:20-1:200

## Applications

**Tested Applications:**

IHC, ELISA

**Species Specificity:**

human, mouse, rat

**Note-IHC: suggested antigen retrieval with TE buffer pH 9.0; (\*) Alternatively, antigen retrieval may be performed with citrate buffer pH 6.0**

**Positive Controls:**

IHC : human kidney tissue,

## Storage

**Storage:**

Store at -20°C. Stable for one year after shipment.

**Storage Buffer:**

PBS with 0.02% sodium azide and 50% glycerol pH 7.3.

Aliquoting is unnecessary for -20°C storage

\*\*\* 20ul sizes contain 0.1% BSA

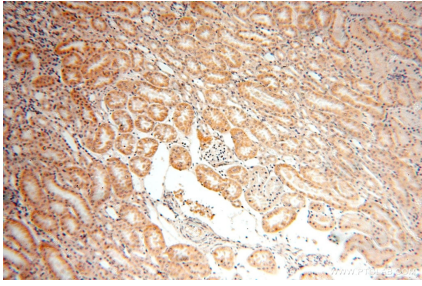
For technical support and original validation data for this product please contact:

T: 1 (888) 4PTGLAB (1-888-478-4522) (toll free in USA), or 1(312) 455-8498 (outside USA)

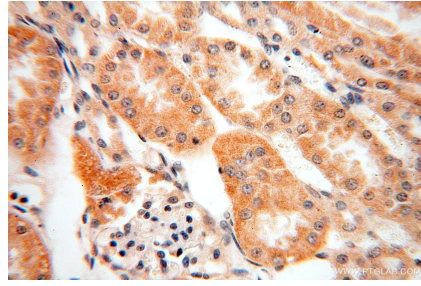
E: [proteintech@ptglab.com](mailto:proteintech@ptglab.com)  
W: [ptglab.com](http://ptglab.com)

This product is exclusively available under Proteintech Group brand and is not available to purchase from any other manufacturer.

## Selected Validation Data



Immunohistochemical analysis of paraffin-embedded human kidney using 15985-1-AP (SFXN2 antibody) at dilution of 1:100 (under 10x lens).



Immunohistochemical analysis of paraffin-embedded human kidney using 15985-1-AP (SFXN2 antibody) at dilution of 1:100 (under 40x lens).