

For Research Use Only

LLGL2 Polyclonal antibody, PBS Only

Catalog Number:15993-1-PBS



Basic Information

Catalog Number:

15993-1-PBS

Size:

100ug, Concentration: 1 mg/ml by Nanodrop;

Source:

Rabbit

Isotype:

IgG

Immunogen Catalog Number:

AG8867

GenBank Accession Number:

BC010879

GeneID (NCBI):

3993

UNIPROT ID:

Q6P1M3

Full Name:

lethal giant larvae homolog 2 (Drosophila)

Calculated MW:

356aa,40 kDa; 1020aa,113 kDa

Observed MW:

113-120 kDa

Purification Method:

Antigen affinity purification

Applications

Tested Applications:

WB, IHC, IF/ICC, Indirect ELISA

Species Specificity:

human

Background Information

Lethal giant larvae (Lgl) is a scaffolding protein that regulates the establishment of apical-basal polarity in epithelial cells. The human homologs of Lgl are known as LLGL1 and LLGL2. LLGL1 is a tumor suppressor in multiple human cancers, including hepatocellular carcinoma, malignant melanoma, and colorectal cancer (PMID: 34178676; 15735678; 16170365). LLGL2 functions as a promoter of tumor growth and not as a tumor suppressor in ER+ breast cancer (PMID: 30996345).

Storage

Storage:

Store at -80°C.

Storage Buffer:

PBS only, pH7.3

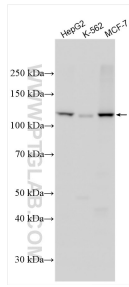
For technical support and original validation data for this product please contact:

T: 1 (888) 4PTGLAB (1-888-478-4522) (toll free in USA), or 1(312) 455-8498 (outside USA)

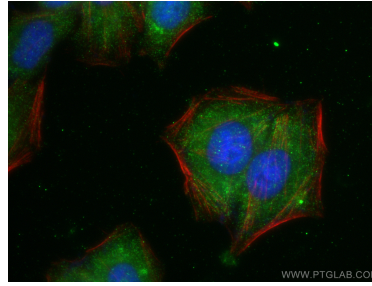
E: proteintech@ptglab.com
W: ptglab.com

This product is exclusively available under Proteintech Group brand and is not available to purchase from any other manufacturer.

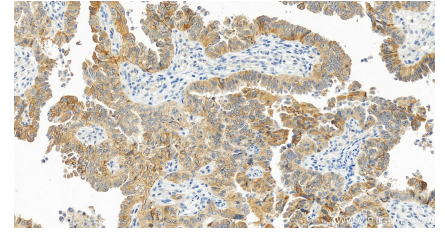
Selected Validation Data



Various lysates were subjected to SDS PAGE followed by western blot with 15993-1-AP (LLGL2 antibody) at dilution of 1:500 incubated at room temperature for 1.5 hours. This data was developed using the same antibody clone with 15993-1-PBS in a different storage buffer formulation.



Immunofluorescent analysis of (-20°C Ethanol) fixed HepG2 cells using LLGL2 antibody (15993-1-AP) at dilution of 1:400 and Coralite® 488-Conjugated AffiniPure Goat Anti-Rabbit IgG(H+L), CL594-phalloidin (red). This data was developed using the same antibody clone with 15993-1-PBS in a different storage buffer formulation.



Immunohistochemical analysis of paraffin-embedded human ovarian cancer slide using 15993-1-AP (LLGL2 antibody) at dilution of 1:400 (under 20x lens). Heat mediated antigen retrieval with Tris-EDTA buffer (pH 9.0). This data was developed using the same antibody clone with 15993-1-PBS in a different storage buffer formulation.