

For Research Use Only

PRCP Polyclonal antibody

Catalog Number: 15995-1-AP **2 Publications**



Basic Information

Catalog Number: 15995-1-AP	GenBank Accession Number: BC001500	Purification Method: Antigen affinity purification
Size: 150ul , Concentration: 350 µg/ml by Nanodrop and 267 µg/ml by Bradford method using BSA as the standard;	GeneID (NCBI): 5547	Recommended Dilutions: WB 1:500-1:1000 IP 0.5-4.0 ug for IP and 1:200-1:1000 for WB
Source: Rabbit	Full Name: prolylcarboxypeptidase (angiotensinase C)	IHC 1:50-1:500
Isotype: IgG	Calculated MW: 496 aa, 56 kDa	
Immunogen Catalog Number: AG8869	Observed MW: 56 kDa	

Applications

Tested Applications: IHC, IP, WB, ELISA	Positive Controls: WB : A549 cells, IP : L02 cells, IHC : human lung cancer tissue,
Cited Applications: IF, WB	
Species Specificity: human, mouse	
Cited Species: human, mouse	

Note-IHC: suggested antigen retrieval with TE buffer pH 9.0; (*) Alternatively, antigen retrieval may be performed with citrate buffer pH 6.0

Background Information

PRCP(Lysosomal Pro-X carboxypeptidase) is also named as PCP and belongs to the peptidase S28 family. This enzyme cleaves C-terminal amino acids linked to proline in peptides such as angiotensin II, III and des-Arg9-bradykinin. PRCP is both a PK activator and an angiotensin II inactivator indicates another previously unappreciated interaction between the plasma kallikrein/kinin and the renin-angiotensin systems(PMID:11830581). Some previous gel filtration and dynamic-light scattering results suggested that PRCP is a dimer in solution(PMID:20540760). The full length protein has a signal peptide, a propeptide and six glycosylation sites and can exist as 65 kDa modified protein.

Notable Publications

Author	Pubmed ID	Journal	Application
Christelle Lenain	26354777	Carcinogenesis	WB
Qiao Deng	37012493	Acta Pharmacol Sin	WB,IF

Storage

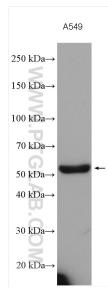
Storage:
Store at -20°C. Stable for one year after shipment.
Storage Buffer:
PBS with 0.02% sodium azide and 50% glycerol pH 7.3.
Aliquoting is unnecessary for -20°C storage

*** 20ul sizes contain 0.1% BSA

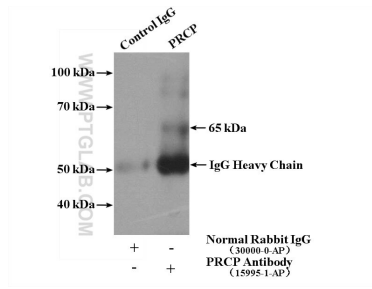
For technical support and original validation data for this product please contact:
T: 1 (888) 4PTGLAB (1-888-478-4522) (toll free in USA), or 1(312) 455-8498 (outside USA)
E: proteintech@ptglab.com
W: ptglab.com

This product is exclusively available under Proteintech Group brand and is not available to purchase from any other manufacturer.

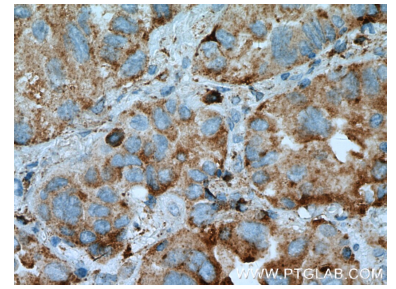
Selected Validation Data



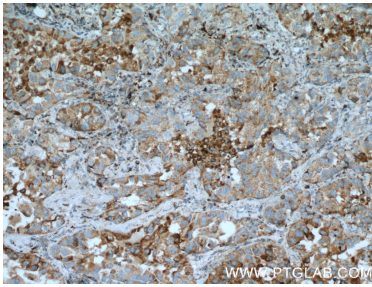
A549 lysates were subjected to SDS PAGE followed by western blot with 15995-1-AP (PRCP antibody) at dilution of 1:500 incubated at room temperature for 1.5 hours.



IP Result of anti-PRCP (IP:15995-1-AP, 4ug; Detection:15995-1-AP 1:300) with L02 cells lysate 1800ug.



Immunohistochemical analysis of paraffin-embedded human lung cancer tissue slide using 15995-1-AP (PRCP Antibody) at dilution of 1:200 (under 40x lens).



Immunohistochemical analysis of paraffin-embedded human lung cancer tissue slide using 15995-1-AP (PRCP Antibody) at dilution of 1:200 (under 10x lens).