

For Research Use Only

ATP5F1 Polyclonal antibody

Catalog Number: 15999-1-AP

24 Publications



Basic Information

Catalog Number:

15999-1-AP

Size:

150ul, Concentration: 350 ug/ml by Nanodrop and 260 ug/ml by Bradford method using BSA as the standard;

Source:

Rabbit

Isotype:

IgG

Immunogen Catalog Number:

AG8571

GenBank Accession Number:

BC005366

GeneID (NCBI):

515

UNIPROT ID:

P24539

Full Name:

ATP synthase, H⁺ transporting, mitochondrial F₀ complex, subunit B1

Calculated MW:

256 aa, 29 kDa

Observed MW:

25-30 kDa

Purification Method:

Antigen affinity purification

Recommended Dilutions:

WB 1:500-1:2000

IHC 1:100-1:400

IF/ICC 1:50-1:500

Applications

Tested Applications:

WB, IHC, IF/ICC, FC (Intra), ELISA

Cited Applications:

WB, IHC, IF, CoIP

Species Specificity:

human, mouse

Cited Species:

human, mouse, rat

Note-IHC: suggested antigen retrieval with TE buffer pH 9.0; (*) Alternatively, antigen retrieval may be performed with citrate buffer pH 6.0

Positive Controls:

WB: mouse heart tissue, mouse skeletal muscle tissue, mouse liver tissue

IHC: human liver tissue, human brain tissue, human heart tissue, human kidney tissue, human skin tissue, human testis tissue

IF/ICC: HeLa cells,

Background Information

ATP5F1(ATP synthase subunit b) belongs to the eukaryotic ATPase B chain family. The ATP5F1 gene encodes subunit B of the mitochondrial ATP synthase Fo unit, which contains 214-amino acid with a 42-amino acid import signal(PMID:1831354). Mitochondrial membrane ATP synthase(F₁F₀ ATP synthase or Complex V) produces ATP from ADP in the presence of a proton gradient across the membrane which is generated by electron transport complexes of the respiratory chain.

Notable Publications

Author	Pubmed ID	Journal	Application
Zhimin Zeng	36160705	Oxid Med Cell Longev	WB,CoIP
Yuehong Wang	32918657	Cardiovasc Drugs Ther	WB
Minghua Yang	36309482	Cell Death Dis	WB

Storage

Storage:

Store at -20°C. Stable for one year after shipment.

Storage Buffer:

PBS with 0.02% sodium azide and 50% glycerol pH 7.3.

Aliquoting is unnecessary for -20°C storage

*** 20ul sizes contain 0.1% BSA

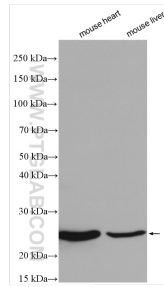
For technical support and original validation data for this product please contact:

T: 1 (888) 4PTGLAB (1-888-478-4522) (toll free in USA), or 1(312) 455-8498 (outside USA)

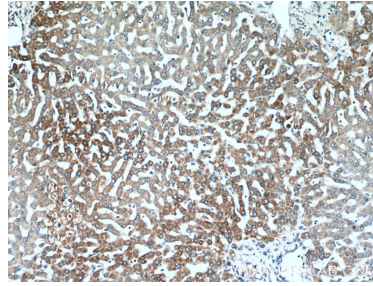
E: proteintech@ptglab.com
W: ptglab.com

This product is exclusively available under Proteintech Group brand and is not available to purchase from any other manufacturer.

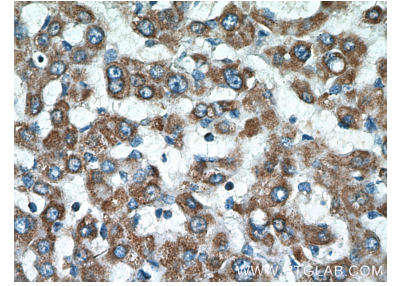
Selected Validation Data



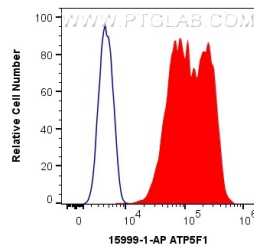
Various lysates were subjected to SDS PAGE followed by western blot with 15999-1-AP (ATP5F1 antibody) at dilution of 1:1000 incubated at room temperature for 1.5 hours.



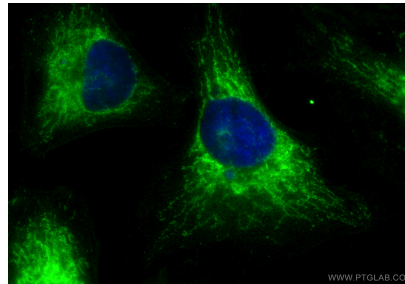
Immunohistochemical analysis of paraffin-embedded human liver tissue slide using 15999-1-AP (ATP5F1 Antibody) at dilution of 1:200 (under 10x lens).



Immunohistochemical analysis of paraffin-embedded human liver tissue slide using 15999-1-AP (ATP5F1 Antibody) at dilution of 1:200 (under 40x lens).



1X10⁶ HeLa cells were intracellularly stained with 0.4 ug Anti-Human ATP5F1 (15999-1-AP) and CoraLite®488-Conjugated AffiniPure Goat Anti-Rabbit IgG(H+L) at dilution 1:1000 (red), or 0.4 ug Isotype Control. Cells were fixed with 4% PFA and permeabilized with Flow Cytometry Perm Buffer (PF00011-C).



Immunofluorescent analysis of (-20°C Ethanol) fixed HeLa cells using ATP5F1 antibody (15999-1-AP) at dilution of 1:200 and Multi-rAb CoraLite® Plus 488-Goat Anti-Rabbit Recombinant Secondary Antibody (H+L) (RGAR002).