

For Research Use Only

RPL27A Polyclonal antibody, PBS Only

Catalog Number: 16002-1-PBS

Featured Product



Basic Information

Catalog Number:

16002-1-PBS

Size:

100ug, Concentration: 1 mg/ml by Nanodrop;

Source:

Rabbit

Isotype:

IgG

Immunogen Catalog Number:

AG8596

GenBank Accession Number:

BC005326

GeneID (NCBI):

6157

UNIPROT ID:

P46776

Full Name:

ribosomal protein L27a

Calculated MW:

148 aa, 18 kDa

Observed MW:

18 kDa

Purification Method:

Antigen affinity purification

Applications

Tested Applications:

WB, IHC, IF/ICC, Indirect ELISA

Species Specificity:

human, mouse, rat

Storage

Storage:

Store at -80°C.

Storage Buffer:

PBS only, pH7.3

For technical support and original validation data for this product please contact:

T: 1 (888) 4PTGLAB (1-888-478-4522) (toll free in USA), or 1(312) 455-8498 (outside USA)

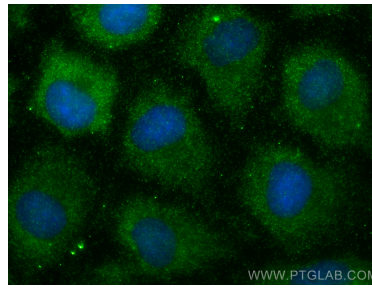
E: proteintech@ptglab.com
W: ptglab.com

This product is exclusively available under Proteintech Group brand and is not available to purchase from any other manufacturer.

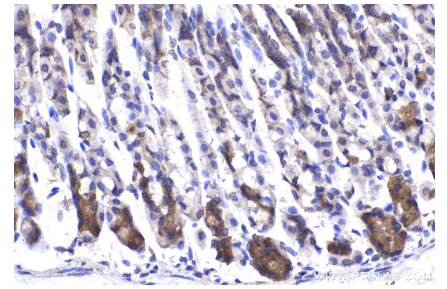
Selected Validation Data



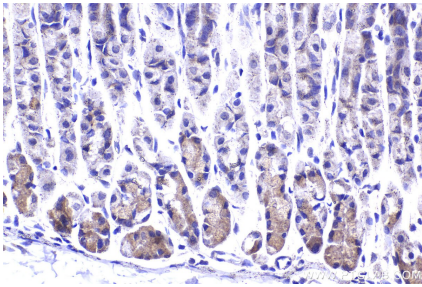
A549 cells were subjected to SDS PAGE followed by western blot with 16002-1-AP (RPL27A Antibody) at dilution of 1:300 incubated at 4 degree celsius over night. This data was developed using the same antibody clone with 16002-1-PBS in a different storage buffer formulation.



Immunofluorescent analysis of (-20°C Methanol) fixed A549 cells using RPL27A antibody (16002-1-AP) at dilution of 1:400 and CoraLite®488-Conjugated Goat Anti-Rabbit IgG(H+L) (SA00013-2). This data was developed using the same antibody clone with 16002-1-PBS in a different storage buffer formulation.



Immunohistochemical analysis of paraffin-embedded mouse stomach tissue slide using 16002-1-AP (RPL27A antibody) at dilution of 1:200 (under 40x lens). Heat mediated antigen retrieval with Tris-EDTA buffer (pH 9.0). This data was developed using the same antibody clone with 16002-1-PBS in a different storage buffer formulation.



Immunohistochemical analysis of paraffin-embedded mouse stomach tissue slide using 16002-1-AP (RPL27A antibody) at dilution of 1:500 (under 40x lens). Heat mediated antigen retrieval with Tris-EDTA buffer (pH 9.0). This data was developed using the same antibody clone with 16002-1-PBS in a different storage buffer formulation.