

For Research Use Only

CISD1 Polyclonal antibody

Catalog Number: 16006-1-AP

Featured Product

44 Publications



Basic Information

Catalog Number:

16006-1-AP

Size:

150ul, Concentration: 800 ug/ml by Nanodrop and 333 ug/ml by Bradford method using BSA as the standard;

Source:

Rabbit

Isotype:

IgG

Immunogen Catalog Number:

AG8680

GenBank Accession Number:

BC007043

GeneID (NCBI):

55847

UNIPROT ID:

Q9NZ45

Full Name:

CDGSH iron sulfur domain 1

Calculated MW:

108 aa, 12 kDa

Observed MW:

14-17 kDa

Purification Method:

Antigen affinity purification

Recommended Dilutions:

WB 1:5000-1:50000

IP 0.5-4.0 ug for 1.0-3.0 mg of total protein lysate

IHC 1:50-1:500

IF/ICC 1:200-1:800

Applications

Tested Applications:

WB, IHC, IF/ICC, IP, ELISA

Cited Applications:

WB, IHC, IF, IP

Species Specificity:

human, mouse, rat

Cited Species:

human, mouse, rat, chicken

Note-IHC: suggested antigen retrieval with TE buffer pH 9.0; (*) Alternatively, antigen retrieval may be performed with citrate buffer pH 6.0

Positive Controls:

WB: mouse kidney tissue, mouse skeletal muscle tissue, rat kidney tissue, rat skeletal muscle tissue

IP: HepG2 cells,

IHC: human pancreas cancer tissue,

IF/ICC: HepG2 cells,

Background Information

MitoNEET, also named CISD1, belongs to a previously uncharacterized ancient family of proteins for which the hallmark is the presence of a unique 39 amino acid CDGSH domain. It is a single-pass type III membrane protein, located in mitochondrion outer membrane and may play a role in regulating maximal capacity for electron transport and oxidative phosphorylation. MitoNEET is a recently identified drug target for a commonly prescribed diabetes drug, Pioglitazone. This antibody recognizing MitoNEET (calculated 12 kDa) as a 17 kDa protein may be due to its posttranslational modification or metal binding activity.

Notable Publications

Author	Pubmed ID	Journal	Application
Malte Gersch	28945249	Nat Struct Mol Biol	WB
Megan E Roche	32920118	Biochim Biophys Acta Mol Basis Dis	WB
Werner J Geldenhuys	28880525	ACS Chem Neurosci	WB,IHC,IF

Storage

Storage:

Store at -20°C. Stable for one year after shipment.

Storage Buffer:

PBS with 0.02% sodium azide and 50% glycerol

Aliquoting is unnecessary for -20°C storage

*** 20ul sizes contain 0.1% BSA

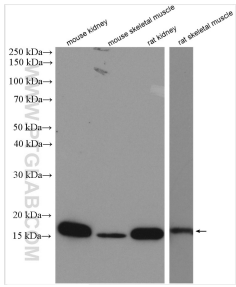
For technical support and original validation data for this product please contact:

T: 1 (888) 4PTGLAB (1-888-478-4522) (toll free in USA), or 1(312) 455-8498 (outside USA)

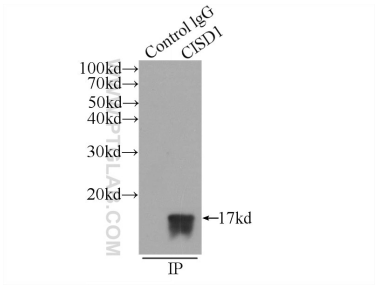
E: proteintech@ptglab.com
W: ptglab.com

This product is exclusively available under Proteintech Group brand and is not available to purchase from any other manufacturer.

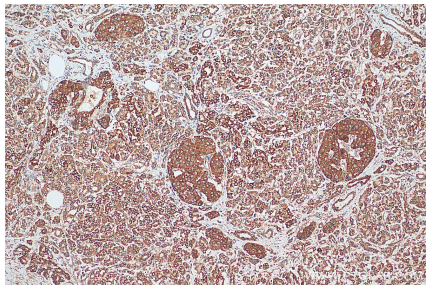
Selected Validation Data



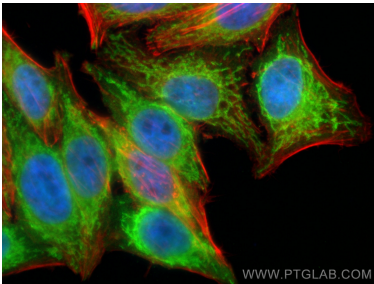
Various lysates were subjected to SDS PAGE followed by western blot with 16006-1-AP (CISD1 antibody) at dilution of 1:30000 incubated at room temperature for 1.5 hours.



IP result of anti-CISD1 (IP:16006-1-AP, 3ug; Detection:16006-1-AP 1:2000) with HepG2 cells lysate 600ug.



Immunohistochemical analysis of paraffin-embedded human pancreas cancer tissue slide using 16006-1-AP (CISD1 antibody) at dilution of 1:200 (under 10x lens). Heat mediated antigen retrieval with Tris-EDTA buffer (pH 9.0).



Immunofluorescent analysis of (4% PFA) fixed HepG2 cells using Cisd1 antibody (16006-1-AP) at dilution of 1:400 and CoraLite®488-Conjugated Goat Anti-Rabbit IgG(H+L) (SA00013-2), CL594-phalloidin (red).