

For Research Use Only

Alpha Tubulin Polyclonal antibody

Catalog Number: 16007-1-AP



Basic Information

Catalog Number: 16007-1-AP	GenBank Accession Number: BC004949	Purification Method: Antigen affinity purification
Size: 150ul , Concentration: 150 µg/ml by Nanodrop and 173 µg/ml by Bradford method using BSA as the standard;	GeneID (NCBI): 84790	Recommended Dilutions: WB 1:1000-1:6000 IHC 1:50-1:500
Source: Rabbit	Full Name: tubulin, alpha 1c	
Isotype: IgG	Calculated MW: 50 kDa	
Immunogen Catalog Number: AG8695	Observed MW: 50 kDa	

Applications

Tested Applications: IHC, WB, ELISA	Positive Controls:
Species Specificity: human, mouse, zebrafish	WB : HeLa cells, NIH/3T3 cells, zebrafish tissues, mouse ovary tissues
Note-IHC: suggested antigen retrieval with TE buffer pH 9.0; (*) Alternatively, antigen retrieval may be performed with citrate buffer pH 6.0	IHC : rat eye tissue,

Background Information

Storage

Storage:
Store at -20°C. Stable for one year after shipment.
Storage Buffer:
PBS with 0.02% sodium azide and 50% glycerol pH 7.3.
Aliquoting is unnecessary for -20°C storage

*** 20ul sizes contain 0.1% BSA

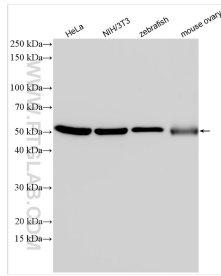
For technical support and original validation data for this product please contact:

T: 1 (888) 4PTGLAB (1-888-478-4522) (toll free in USA), or 1(312) 455-8498 (outside USA)

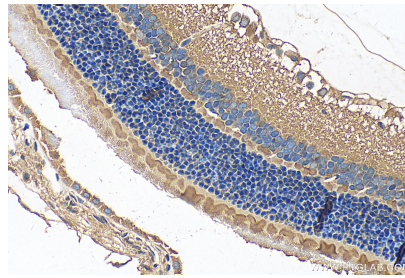
E: proteintech@ptglab.com
W: ptglab.com

This product is exclusively available under Proteintech Group brand and is not available to purchase from any other manufacturer.

Selected Validation Data



Various lysates were subjected to SDS PAGE followed by western blot with 16007-1-AP (Alpha Tubulin antibody) at dilution of 1:3000 incubated at room temperature for 1.5 hours.



Immunohistochemical analysis of paraffin-embedded rat eye tissue slide using 16007-1-AP (Alpha Tubulin antibody) at dilution of 1:200 (under 40x lens). Heat mediated antigen retrieval with Tris-EDTA buffer (pH 9.0).