

For Research Use Only

# PYCRL Polyclonal antibody

Catalog Number: 16008-1-AP

2 Publications



## Basic Information

Catalog Number:

16008-1-AP

Size:

150ul, Concentration: 450 ug/ml by Nanodrop;

Source:

Rabbit

Isotype:

IgG

Immunogen Catalog Number:

AG8716

GenBank Accession Number:

BC007993

GeneID (NCBI):

65263

UNIPROT ID:

Q53H96

Full Name:

pyrroline-5-carboxylate reductase-like

Calculated MW:

274 aa, 29 kDa

Observed MW:

29 kDa

Purification Method:

Antigen affinity purification

Recommended Dilutions:

WB 1:1000-1:4000

## Applications

Tested Applications:

WB, ELISA

Cited Applications:

WB

Species Specificity:

human, mouse

Cited Species:

human

Positive Controls:

WB : MDA-MB-231 cells, mouse kidney tissue

## Background Information

Proline conversion into P5C is coupled to the P5C reduction into proline, catalyzed by P5C reductase. This enzyme has three isoforms: PYCR1/PYCR2, which are specific for the mitochondrial compartment and the PYCRL present in cytosol. The conversion of P5C to proline, and its transport between mitochondria and cytosol, are also coupled with glucose metabolism by the pentose phosphate pathway.(PMID: 35163433)

## Notable Publications

Author	Pubmed ID	Journal	Application
Wei Liu	26598224	Sci Rep	WB
Yanlong Zhou	33984791	Vet Microbiol	WB

## Storage

Storage:

Store at -20°C. Stable for one year after shipment.

Storage Buffer:

PBS with 0.02% sodium azide and 50% glycerol pH 7.3.

Aliquoting is unnecessary for -20°C storage

\*\*\* 20ul sizes contain 0.1% BSA

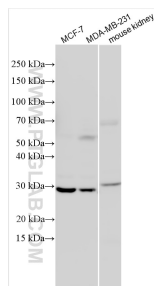
For technical support and original validation data for this product please contact:

T: 1 (888) 4PTGLAB (1-888-478-4522) (toll free in USA), or 1(312) 455-8498 (outside USA)

E: [proteintech@ptglab.com](mailto:proteintech@ptglab.com)  
W: [ptglab.com](http://ptglab.com)

This product is exclusively available under Proteintech Group brand and is not available to purchase from any other manufacturer.

## Selected Validation Data



Various lysates were subjected to SDS PAGE followed by western blot with 16008-1-AP (PYCRL antibody) at dilution of 1:2000 incubated at room temperature for 1.5 hours.