

For Research Use Only

PYCR1 Polyclonal antibody, PBS Only

Catalog Number: 16008-1-PBS



Basic Information

Catalog Number:

16008-1-PBS

Size:

100ug, Concentration: 1 mg/ml by Nanodrop;

Source:

Rabbit

Isotype:

IgG

Immunogen Catalog Number:

AG8716

GenBank Accession Number:

BC007993

GeneID (NCBI):

65263

UNIPROT ID:

Q53H96

Full Name:

pyrroline-5-carboxylate reductase-like

Calculated MW:

274 aa, 29 kDa

Observed MW:

29 kDa

Purification Method:

Antigen affinity purification

Applications

Tested Applications:

WB, Indirect ELISA

Species Specificity:

human, mouse

Background Information

Proline conversion into P5C is coupled to the P5C reduction into proline, catalyzed by P5C reductase. This enzyme has three isoforms: PYCR1/PYCR2, which are specific for the mitochondrial compartment and the PYCR1 present in cytosol. The conversion of P5C to proline, and its transport between mitochondria and cytosol, are also coupled with glucose metabolism by the pentose phosphate pathway. (PMID: 35163433)

Storage

Storage:

Store at -80°C.

Storage Buffer:

PBS only, pH7.3

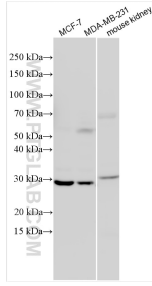
For technical support and original validation data for this product please contact:

T: 1 (888) 4PTGLAB (1-888-478-4522) (toll free in USA), or 1(312) 455-8498 (outside USA)

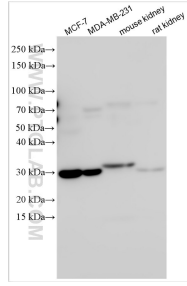
E: proteintech@ptglab.com
W: ptglab.com

This product is exclusively available under Proteintech Group brand and is not available to purchase from any other manufacturer.

Selected Validation Data



Various lysates were subjected to SDS PAGE followed by western blot with 16008-1-AP (PYCRL antibody) at dilution of 1:2000 incubated at room temperature for 1.5 hours. This data was developed using the same antibody clone with 16008-1-PBS in a different storage buffer formulation.



Various lysates were subjected to SDS PAGE followed by western blot with 16008-1-AP (PYCRL antibody) at dilution of 1:6000 incubated at room temperature for 1.5 hours. This data was developed using the same antibody clone with 16008-1-PBS in a different storage buffer formulation.