

For Research Use Only

# PLA2G12A Polyclonal antibody

Catalog Number: 16009-1-AP

5 Publications



## Basic Information

<b>Catalog Number:</b> 16009-1-AP	<b>GenBank Accession Number:</b> BC017218	<b>Purification Method:</b> Antigen affinity purification
<b>Size:</b> 150ul , Concentration: 300 ug/ml by Nanodrop and 273 ug/ml by Bradford method using BSA as the standard;	<b>GeneID (NCBI):</b> 81579	<b>Recommended Dilutions:</b> WB 1:500-1:2000
<b>Source:</b> Rabbit	<b>UNIPROT ID:</b> Q9BZM1	<b>IHC 1:20-1:200</b>
<b>Isotype:</b> IgG	<b>Full Name:</b> phospholipase A2, group XIA	<b>IF/ICC 1:20-1:200</b>
<b>Immunogen Catalog Number:</b> AG8722	<b>Calculated MW:</b> 189 aa, 21 kDa	
	<b>Observed MW:</b> 21-24 kDa	

## Applications

<b>Tested Applications:</b> WB, IHC, IF/ICC, ELISA	<b>Positive Controls:</b>
<b>Cited Applications:</b> WB, IHC	<b>WB :</b> mouse skeletal muscle tissue, HEK-293 cells, mouse heart tissue, mouse kidney tissue
<b>Species Specificity:</b> human, mouse, rat	<b>IHC :</b> human colon cancer tissue, human skeletal muscle tissue
<b>Cited Species:</b> human, mouse, rat	<b>IF/ICC :</b> HEK-293 cells,
<b>Note-IHC: suggested antigen retrieval with TE buffer pH 9.0; (*) Alternatively, antigen retrieval may be performed with citrate buffer pH 6.0</b>	

## Background Information

PLA2G12A (or PLA2G12) gene encodes group XII secreted phospholipase A2 (sPLA2) which catalyzes the calcium-dependent hydrolysis of the 2-acyl groups in 3-sn-phosphoglycerides. Cellular arachidonate (AA) release and prostaglandin (PG) production is regulated by sPLA(2)s, groups III and XII. Group XII sPLA2 have relatively low specific activity and are structurally and functionally distinct from other sPLA2s. Cells transfected with group XII sPLA(2) exhibited abnormal morphology, suggesting a unique functional aspect of this enzyme. Role of sPLA2s as potential tumour biomarkers and therapeutic targets for various cancers have been reported.

## Notable Publications

Author	Pubmed ID	Journal	Application
Alexandros Nicolaou	28917158	Atherosclerosis	IHC,WB
Tao Li	30402154	Exp Ther Med	WB
Koji Suzuki	25132377	J Atheroscler Thromb	IHC

## Storage

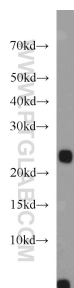
**Storage:**  
Store at -20°C. Stable for one year after shipment.  
**Storage Buffer:**  
PBS with 0.02% sodium azide and 50% glycerol pH 7.3.  
**Aliquoting is unnecessary for -20°C storage**

\*\*\* 20ul sizes contain 0.1% BSA

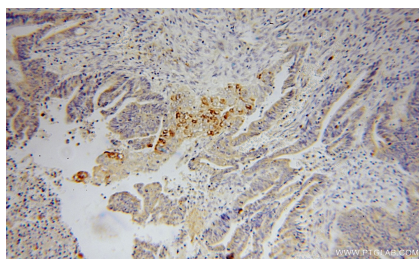
For technical support and original validation data for this product please contact:  
T: 1 (888) 4PTGLAB (1-888-478-4522) (toll free in USA), or 1(312) 455-8498 (outside USA)  
E: [proteintech@ptglab.com](mailto:proteintech@ptglab.com)  
W: [ptglab.com](http://ptglab.com)

This product is exclusively available under Proteintech Group brand and is not available to purchase from any other manufacturer.

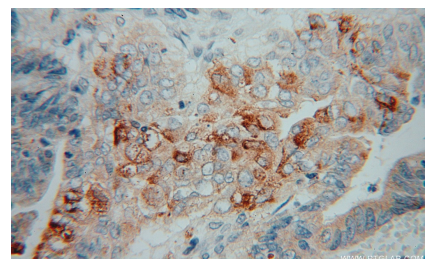
## Selected Validation Data



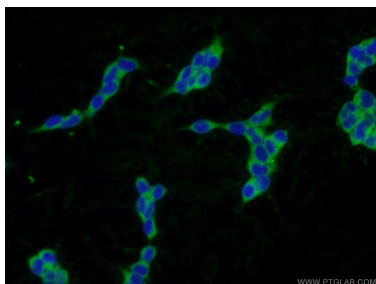
mouse skeletal muscle tissue were subjected to SDS PAGE followed by western blot with 16009-1-AP (PLA2G12A antibody) at dilution of 1:1000 incubated at room temperature for 1.5 hours.



Immunohistochemical analysis of paraffin-embedded human colon cancer using 16009-1-AP (PLA2G12A antibody) at dilution of 1:50 (under 10x lens).



Immunohistochemical analysis of paraffin-embedded human colon cancer using 16009-1-AP (PLA2G12A antibody) at dilution of 1:50 (under 40x lens).



Immunofluorescent analysis of HEK-293 cells using 16009-1-AP (PLA2G12A antibody) at dilution of 1:50 and Alexa Fluor 488-conjugated Goat Anti-Rabbit IgG(H+L).