

For Research Use Only

LAS1L Polyclonal antibody

Catalog Number: 16010-1-AP **3 Publications**



Basic Information

Catalog Number: 16010-1-AP	GenBank Accession Number: BC014545	Purification Method: Antigen affinity purification
Size: 150ul , Concentration: 400 µg/ml by Nanodrop;	GeneID (NCBI): 81887	Recommended Dilutions: WB 1:500-1:3000 IP 0.5-4.0 ug for IP and 1:500-1:2000 for WB
Source: Rabbit	Full Name: LAS1-like (<i>S. cerevisiae</i>)	IF 1:20-1:200
Isotype: IgG	Calculated MW: 734 aa, 83 kDa	
Immunogen Catalog Number: AG8732	Observed MW: 83 kDa, 70-75 kDa	

Applications

Tested Applications: IF, IP, WB, ELISA	Positive Controls:
Cited Applications: WB	WB: COLO 320 cells, HEK-293 cells, HeLa cells, HepG2 cells, PC-3 cells
Species Specificity: human, mouse, rat	IP: HEK-293 cells,
Cited Species: human	IF: HepG2 cells,

Background Information

LAS1L is a nucleolar protein required for the synthesis of the 60S ribosomal subunit and maturation of the 28S rRNA. LAS1L interacts with PELP1, TEX10, and WDR18, along with NOL9 and SENP3, to form a novel nucleolar complex that cofractionates with the 60S preribosomal subunit.

Notable Publications

Author	Pubmed ID	Journal	Application
Xue Yang	37853941	Mol Oncol	WB
Kristin A Altwegg	37199805	Breast Cancer Res Treat	WB
Fanis Pavlos P	22872859	Mol Cell Proteomics	WB

Storage

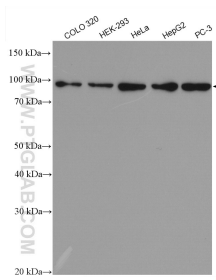
Storage:
Store at -20°C. Stable for one year after shipment.
Storage Buffer:
PBS with 0.02% sodium azide and 50% glycerol pH 7.3.
Aliquoting is unnecessary for -20°C storage

*** 20ul sizes contain 0.1% BSA

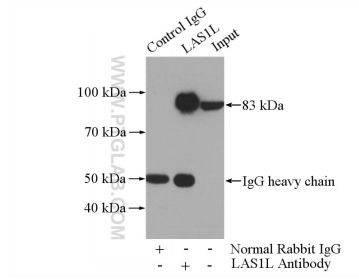
For technical support and original validation data for this product please contact:
T: 1 (888) 4PTGLAB (1-888-478-4522) (toll free in USA), or 1(312) 455-8498 (outside USA)
E: proteintech@ptglab.com
W: ptglab.com

This product is exclusively available under Proteintech Group brand and is not available to purchase from any other manufacturer.

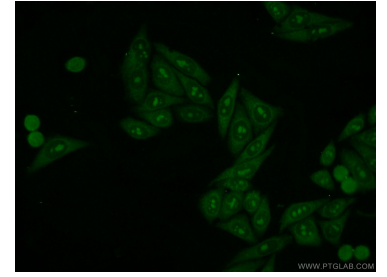
Selected Validation Data



Various lysates were subjected to SDS PAGE followed by western blot with 16010-1-AP (LAS1L antibody) at dilution of 1:1500 incubated at room temperature for 1.5 hours.



IP Result of anti-LAS1L (IP:16010-1-AP, 4 μ g; Detection:16010-1-AP 1:1000) with HEK-293 cells lysate 1200 μ g.



Immunofluorescent analysis of HepG2 cells using 16010-1-AP (LAS1L antibody) at dilution of 1:50 and Alexa Fluor 488-conjugated AffiniPure Goat Anti-Rabbit IgG(H+L).