

For Research Use Only

NAP1L4 Polyclonal antibody

Catalog Number: 16018-1-AP

Featured Product

7 Publications



Basic Information

Catalog Number:

16018-1-AP

Size:

150ul, Concentration: 600 ug/ml by Nanodrop and 280 ug/ml by Bradford method using BSA as the standard;

Source:

Rabbit

Isotype:

IgG

Immunogen Catalog Number:

AG8827

GenBank Accession Number:

BC022090

GeneID (NCBI):

4676

UNIPROT ID:

Q99733

Full Name:

nucleosome assembly protein 1-like 4

Calculated MW:

375 aa, 43 kDa

Observed MW:

52 kDa

Purification Method:

Antigen affinity purification

Recommended Dilutions:

WB 1:1000-1:4000

IP 0.5-4.0 ug for 1.0-3.0 mg of total protein lysate

IHC 1:20-1:200

Applications

Tested Applications:

WB, IP, IHC, ELISA

Cited Applications:

WB, IHC, IF, RIP

Species Specificity:

human, mouse, rat

Cited Species:

human, mouse

Note-IHC: suggested antigen retrieval with TE buffer pH 9.0; (*) Alternatively, antigen retrieval may be performed with citrate buffer pH 6.0

Positive Controls:

WB : HeLa cells, mouse liver tissue, mouse testis tissue, HEK-293 cells, A431 cells

IP : HeLa cells,

IHC : human liver tissue,

Notable Publications

Author	Pubmed ID	Journal	Application
Chen Chen	34499080	J Cell Biol	WB
Hélène Meistermann	25044019	Mol Cell Proteomics	WB
Francisco Dominguez	34076483	J Virol	IF, WB

Storage

Storage:

Store at -20°C. Stable for one year after shipment.

Storage Buffer:

PBS with 0.02% sodium azide and 50% glycerol pH 7.3.

Aliquoting is unnecessary for -20°C storage

*** 20ul sizes contain 0.1% BSA

For technical support and original validation data for this product please contact:

T: 1 (888) 4PTGLAB (1-888-478-4522) (toll free in USA), or 1(312) 455-8498 (outside USA)

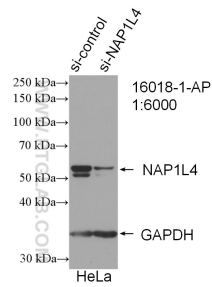
E: proteintech@ptglab.com
W: ptglab.com

This product is exclusively available under Proteintech Group brand and is not available to purchase from any other manufacturer.

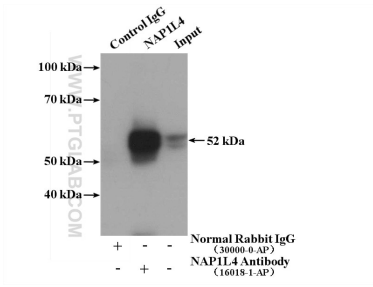
Selected Validation Data



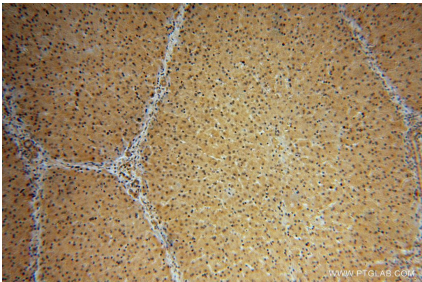
HeLa cells were subjected to SDS PAGE followed by western blot with 16018-1-AP (NAP1L4 antibody) at dilution of 1:1000 incubated at room temperature for 1.5 hours.



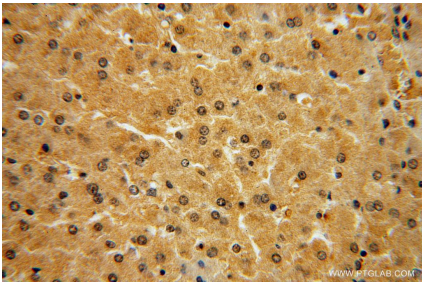
WB result of NAP1L4 antibody (16018-1-AP; 1:6000; incubated at room temperature for 1.5 hours) with sh-Control and sh-NAP1L4 transfected HeLa cells.



IP result of anti-NAP1L4 (IP:16018-1-AP, 4ug; Detection:16018-1-AP 1:1000) with HeLa cells lysate 4000ug.



Immunohistochemical analysis of paraffin-embedded human liver using 16018-1-AP (NAP1L4 antibody) at dilution of 1:100 (under 10x lens).



Immunohistochemical analysis of paraffin-embedded human liver using 16018-1-AP (NAP1L4 antibody) at dilution of 1:100 (under 40x lens).