

For Research Use Only

DBR1 Polyclonal antibody

Catalog Number: 16019-1-AP

Featured Product

8 Publications



Basic Information

Catalog Number:

16019-1-AP

Size:

150ul, Concentration: 600 ug/ml by Nanodrop;

Source:

Rabbit

Isotype:

IgG

Immunogen Catalog Number:

AG8830

GenBank Accession Number:

BC009472

GeneID (NCBI):

51163

UNIPROT ID:

Q9UK59

Full Name:

debranching enzyme homolog 1 (S. cerevisiae)

Calculated MW:

544 aa, 62 kDa

Observed MW:

70-80 kDa

Purification Method:

Antigen affinity purification

Recommended Dilutions:

WB 1:500-1:3000

IP 0.5-4.0 ug for 1.0-3.0 mg of total protein lysate

IHC 1:20-1:200

IF/ICC 1:200-1:800

Applications

Tested Applications:

WB, IHC, IF/ICC, IP, ELISA

Cited Applications:

WB, IHC, IF

Species Specificity:

human, mouse

Cited Species:

human, rat

Note-IHC: suggested antigen retrieval with TE buffer pH 9.0; (*) Alternatively, antigen retrieval may be performed with citrate buffer pH 6.0

Positive Controls:

WB : human brain tissue, HepG2 cells, HeLa cells

IP : mouse brain tissue, HeLa cells

IHC : human placenta tissue,

IF/ICC : HeLa cells,

Background Information

DBR1(Lariat debranching enzyme) hydrolyzes 2-prime-to-5-prime branched phosphodiester bonds at the branch point of excised lariat intron RNA and converts them into linear molecules. DBR1 belongs to the lariat debranching enzyme family. Inhibitor of Dbr1 can suppress TDP-43 toxicity in primary neurons, suggesting that Dbr1 could be a potential therapeutic target for ALS and related TDP-43 proteinopathies (PMID: 23104007). This protein has 2 isoforms produced by alternative splicing.

Notable Publications

Author	Pubmed ID	Journal	Application
Xiaoqin Xu	35244467	Technol Cancer Res Treat	IHC
So Masaki	25671812	Int J Mol Sci	WB, IHC
Yi-Hao Chan	39023559	J Exp Med	WB

Storage

Storage:

Store at -20°C. Stable for one year after shipment.

Storage Buffer:

PBS with 0.02% sodium azide and 50% glycerol pH 7.3.

Aliquoting is unnecessary for -20°C storage

*** 20ul sizes contain 0.1% BSA

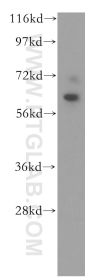
For technical support and original validation data for this product please contact:

T: 1 (888) 4PTGLAB (1-888-478-4522) (toll free in USA), or 1(312) 455-8498 (outside USA)

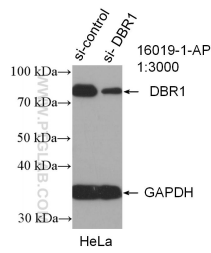
E: proteintech@ptglab.com
W: ptglab.com

This product is exclusively available under Proteintech Group brand and is not available to purchase from any other manufacturer.

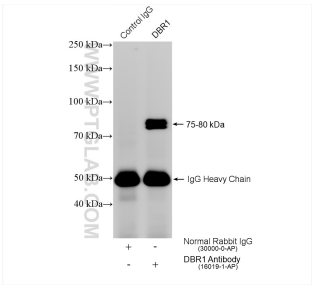
Selected Validation Data



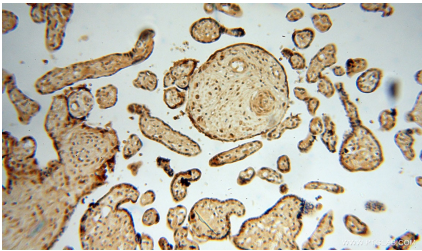
human brain tissue were subjected to SDS PAGE followed by western blot with 16019-1-AP (DBR1 antibody) at dilution of 1:500 incubated at room temperature for 1.5 hours.



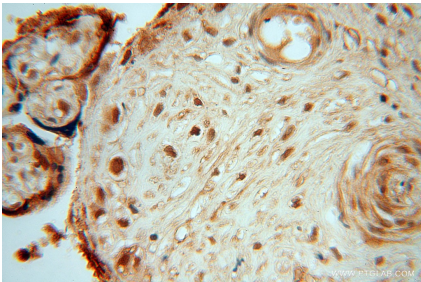
WB result of DBR1 antibody (16019-1-AP; 1:3000; incubated at room temperature for 1.5 hours) with sh-Control and sh-DBR1 transfected HeLa cells.



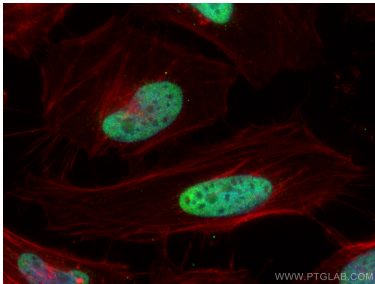
IP result of anti-DBR1 (IP:16019-1-AP, 4ug; Detection:16019-1-AP 1:500) with mouse brain tissue lysate 1280 ug.



Immunohistochemical analysis of paraffin-embedded human placenta using 16019-1-AP (DBR1 antibody) at dilution of 1:100 (under 10x lens).



Immunohistochemical analysis of paraffin-embedded human placenta using 16019-1-AP (DBR1 antibody) at dilution of 1:100 (under 40x lens).



Immunofluorescent analysis of (4% PFA) fixed HeLa cells using DBR1 antibody (16019-1-AP) at dilution of 1:400 and CoraLite®488-Conjugated Goat Anti-Rabbit IgG(H+L), CL594-Phalloidin (red).