

For Research Use Only

# GALM Polyclonal antibody

Catalog Number: 16022-1-AP

Featured Product

2 Publications



## Basic Information

### Catalog Number:

16022-1-AP

### Size:

150ul, Concentration: 800 ug/ml by Nanodrop;

### Source:

Rabbit

### Isotype:

IgG

### Immunogen Catalog Number:

AG8842

### GenBank Accession Number:

BC019263

### GeneID (NCBI):

130589

### UNIPROT ID:

Q96C23

### Full Name:

galactose mutarotase (aldose 1-epimerase)

### Calculated MW:

342 aa, 38 kDa

### Observed MW:

38 kDa

### Purification Method:

Antigen affinity purification

### Recommended Dilutions:

WB 1:1000-1:8000

IHC 1:20-1:200

## Applications

### Tested Applications:

WB, IHC, ELISA

### Cited Applications:

WB, IHC

### Species Specificity:

human, mouse

### Cited Species:

human

### Positive Controls:

WB : HeLa cells, HepG2 cells

IHC : human heart tissue, human brain tissue, human spleen tissue, mouse spleen tissue

**Note-IHC: suggested antigen retrieval with TE buffer pH 9.0; (\*) Alternatively, antigen retrieval may be performed with citrate buffer pH 6.0**

## Background Information

GALM, also named as Aldose 1-epimerase, belongs to the aldose epimerase family. GALM is a mutarotase that catalyzes the interconversion of beta-D-galactose and alpha-D-galactose during galactose metabolism. GALM is involved in the maintenance of the equilibrium between the beta- and alpha- anomers of galactose, therefore ensuring a sufficient supply of the alpha-anomer for GALK1. Galm is also active on D-glucose, but its preference for galactose is higher than that of glucose. The calculated molecular weight of GALM is 38 kDa.

## Notable Publications

Author	Pubmed ID	Journal	Application
Yoichi Wada	30451973	Genet Med	WB
Jiacheng Xu	35127693	Front Cell Dev Biol	WB,IHC

## Storage

### Storage:

Store at -20°C. Stable for one year after shipment.

### Storage Buffer:

PBS with 0.02% sodium azide and 50% glycerol pH 7.3.

Aliquoting is unnecessary for -20°C storage

\*\*\* 20ul sizes contain 0.1% BSA

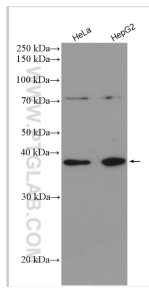
For technical support and original validation data for this product please contact:

T: 1 (888) 4PTGLAB (1-888-478-4522) (toll free in USA), or 1(312) 455-8498 (outside USA)

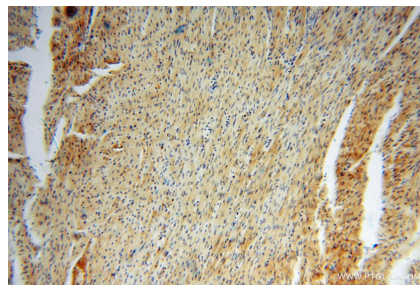
E: [proteintech@ptglab.com](mailto:proteintech@ptglab.com)  
W: [ptglab.com](http://ptglab.com)

This product is exclusively available under Proteintech Group brand and is not available to purchase from any other manufacturer.

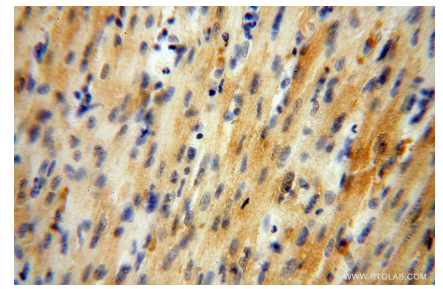
## Selected Validation Data



Various lysates were subjected to SDS PAGE followed by western blot with 16022-1-AP (GALM antibody) at dilution of 1:4000 incubated at room temperature for 1.5 hours.



Immunohistochemical analysis of paraffin-embedded human heart using 16022-1-AP (GALM antibody) at dilution of 1:50 (under 10x lens).



Immunohistochemical analysis of paraffin-embedded human heart using 16022-1-AP (GALM antibody) at dilution of 1:50 (under 40x lens).