

For Research Use Only

LETM1 Polyclonal antibody

Catalog Number: 16024-1-AP

Featured Product

13 Publications



Basic Information

Catalog Number: 16024-1-AP	GenBank Accession Number: BC021208	Purification Method: Antigen affinity purification
Size: 150ul, Concentration: 1000 µg/ml by Nanodrop and 347 µg/ml by Bradford method using BSA as the standard;	GeneID (NCBI): 3954	Recommended Dilutions: WB 1:2000-1:10000 IHC 1:50-1:500 IF 1:200-1:800
Source: Rabbit	UNIPROT ID: O95202	
Isotype: IgG	Full Name: leucine zipper-EF-hand containing transmembrane protein 1	
Immunogen Catalog Number: AG8861	Calculated MW: 739 aa, 83 kDa	
	Observed MW: 83 kDa	

Applications

Tested Applications:

WB, IF, IHC, ELISA

Cited Applications:

WB, IF, CoIP

Species Specificity:

human

Cited Species:

human, rat, mouse

Positive Controls:

WB: A549 cells, HEK-293 cells, HeLa cells, HepG2 cells, Jurkat cells, Ramos cells

IHC: human breast cancer tissue, human oesophagus cancer tissue

IF: HeLa cells,

Note-IHC: suggested antigen retrieval with TE buffer pH 9.0; (*) Alternatively, antigen retrieval may be performed with citrate buffer pH 6.0

Background Information

LETM1 is a mitochondrial inner membrane protein. It functions to maintain the mitochondrial tubular shapes and is required for normal mitochondrial morphology and cellular viability. It served as an anchor protein for complex formation between mitochondria and ribosome, and regulated mitochondrial biogenesis. It was also identified in Wolf-Hirschhorn syndrome, and was deleted in nearly all patients with the syndrome. A recent study determined that adenovirus-mediated LETM1 may provide a useful target for designing lung tumor prevention and treatment.

Notable Publications

Author	Pubmed ID	Journal	Application
Giulia Rossetti	34559558	Sci Adv	WB
Gayathri K Natarajan	33041851	Front Physiol	WB
Yoshihiro Miyagawa	33110478	Oncotarget	WB

Storage

Storage:

Store at -20°C. Stable for one year after shipment.

Storage Buffer:

PBS with 0.02% sodium azide and 50% glycerol pH 7.3.

Aliquoting is unnecessary for -20°C storage

*** 20ul sizes contain 0.1% BSA

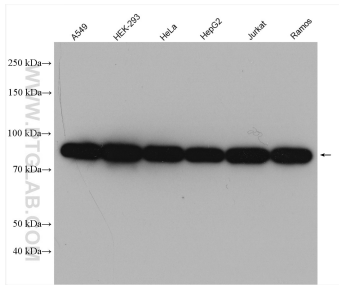
For technical support and original validation data for this product please contact:

T: 1 (888) 4PTGLAB (1-888-478-4522) (toll free in USA), or 1(312) 455-8498 (outside USA)

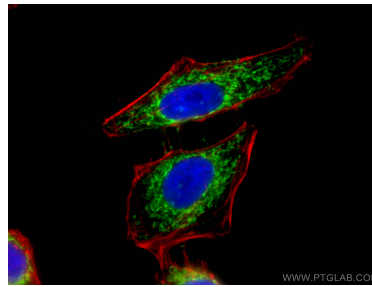
E: proteintech@ptglab.com
W: ptglab.com

This product is exclusively available under Proteintech Group brand and is not available to purchase from any other manufacturer.

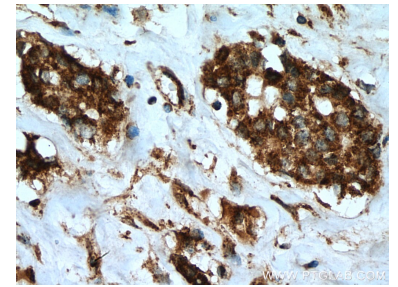
Selected Validation Data



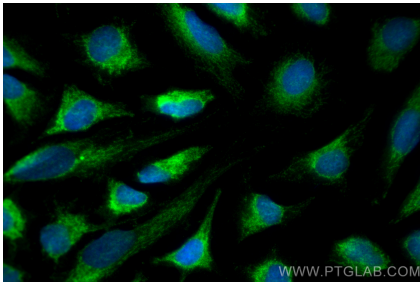
Various lysates were subjected to SDS PAGE followed by western blot with 16024-1-AP (LETM1 antibody) at dilution of 1:8000 incubated at room temperature for 1.5 hours.



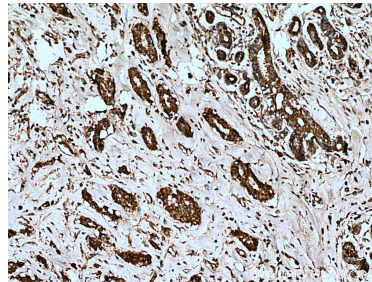
Immunofluorescent analysis of (4% PFA) fixed HeLa cells using 16024-1-AP (LETM1 antibody), at dilution of 1:200 and CoraLite®488-Conjugated AffiniPure Goat Anti-Rabbit IgG(H+L). F-actin is stained using CL555-phalloidin (red) and DNA is stained by DAPI (blue).



Immunohistochemical analysis of paraffin-embedded human breast cancer tissue slide using 16024-1-AP (LETM1 antibody) at dilution of 1:200 (under 40x lens). Heat mediated antigen retrieval with Tris-EDTA buffer (pH 9.0).



Immunofluorescent analysis of (4% PFA) fixed HeLa cells using LETM1 antibody (16024-1-AP) at dilution of 1:400 and CoraLite®488-Conjugated AffiniPure Goat Anti-Rabbit IgG(H+L).



Immunohistochemical analysis of paraffin-embedded human breast cancer tissue slide using 16024-1-AP (LETM1 antibody) at dilution of 1:200 (under 10x lens). Heat mediated antigen retrieval with Tris-EDTA buffer (pH 9.0).