

For Research Use Only

# Cystatin SN/CST1 Polyclonal antibody

Catalog Number: 16025-1-AP

Featured Product

13 Publications



## Basic Information

### Catalog Number:

16025-1-AP

### Size:

150ul, Concentration: 700 ug/ml by Nanodrop and 347 ug/ml by Bradford method using BSA as the standard;

### Source:

Rabbit

### Isotype:

IgG

### Immunogen Catalog Number:

AG8862

### GenBank Accession Number:

BC021225

### GeneID (NCBI):

1469

### UNIPROT ID:

P01037

### Full Name:

cystatin SN

### Calculated MW:

141 aa, 16 kDa

### Observed MW:

14-16 kDa

### Purification Method:

Antigen affinity purification

### Recommended Dilutions:

WB 1:1000-1:8000

## Applications

### Tested Applications:

WB, FC (Intra), ELISA

### Cited Applications:

WB, IHC, IF, IP, CoIP, ELISA

### Species Specificity:

human, mouse

### Cited Species:

human

### Positive Controls:

WB : MDA-MB-231 cells, COLO 320 cells, human adrenal gland tissue, human testis tissue, human saliva, SW480 cells, mouse skin tissue

## Background Information

CST1, or cystatin SN, is a gene in humans that encodes a secreted protein belonging to the type 2 cystatin superfamily, which includes CST1, CST2, CST3, CST4, and CST5. These proteins are cysteine proteinase inhibitors found in various human fluids and secretions, where they appear to provide protective functions. CST1 is specifically found in saliva, tears, urine, and seminal fluid, and it plays a role in inhibiting the activity of cysteine proteases. CST1 has been implicated in various pathological processes, including tumor invasion and metastasis. Overexpression of CST1 has been observed in several types of cancer, such as lung, breast, colorectal, and gastric cancer, suggesting its role in the proliferation, invasion, and metastasis of these tumors.

## Notable Publications

Author	Pubmed ID	Journal	Application
Jin Lei L	22688893	Cell Res	WB
Dongbao Li	36369321	Oncogene	WB,IHC,IF,IP
Da-Nian Dai	28523467	J Mol Med (Berl)	WB,IHC

## Storage

### Storage:

Store at -20°C. Stable for one year after shipment.

### Storage Buffer:

PBS with 0.02% sodium azide and 50% glycerol pH 7.3.

Aliquoting is unnecessary for -20°C storage

\*\*\* 20ul sizes contain 0.1% BSA

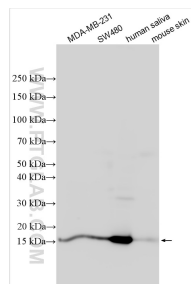
For technical support and original validation data for this product please contact:

T: 1 (888) 4PTGLAB (1-888-478-4522) (toll free in USA), or 1(312) 455-8498 (outside USA)

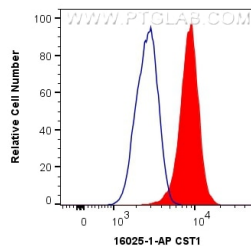
E: [proteintech@ptglab.com](mailto:proteintech@ptglab.com)  
W: [ptglab.com](http://ptglab.com)

This product is exclusively available under Proteintech Group brand and is not available to purchase from any other manufacturer.

## Selected Validation Data



Various lysates were subjected to SDS PAGE followed by western blot with 16025-1-AP (CST1 antibody) at dilution of 1:4000 incubated at room temperature for 1.5 hours.



$1 \times 10^6$  MCF-7 cells were intracellularly stained with 0.4  $\mu$ g Anti-Human CST1 (16025-1-AP) and CoraLite®488-Conjugated AffiniPure Goat Anti-Rabbit IgG(H+L) at dilution 1:1000 (red), or 0.4  $\mu$ g Isotype Control. Cells were fixed with 4% PFA and permeabilized with Flow Cytometry Perm Buffer (PF00011-C).