

For Research Use Only

Cystatin SN/CST1 Polyclonal antibody, PBS Only

Catalog Number: 16025-1-PBS

Featured Product



Basic Information

Catalog Number:

16025-1-PBS

Size:

100ug, Concentration: 1 mg/ml by
Nanodrop;

Source:

Rabbit

Isotype:

IgG

Immunogen Catalog Number:

AG8862

GenBank Accession Number:

BC021225

GeneID (NCBI):

1469

UNIPROT ID:

P01037

Full Name:

cystatin SN

Calculated MW:

141 aa, 16 kDa

Observed MW:

14-16 kDa

Purification Method:

Antigen affinity purification

Applications

Tested Applications:

WB, FC (Intra), ELISA

Species Specificity:

human, mouse

Background Information

CST1, or cystatin SN, is a gene in humans that encodes a secreted protein belonging to the type 2 cystatin superfamily, which includes CST1, CST2, CST3, CST4, and CST5. These proteins are cysteine proteinase inhibitors found in various human fluids and secretions, where they appear to provide protective functions. CST1 is specifically found in saliva, tears, urine, and seminal fluid, and it plays a role in inhibiting the activity of cysteine proteases. CST1 has been implicated in various pathological processes, including tumor invasion and metastasis. Overexpression of CST1 has been observed in several types of cancer, such as lung, breast, colorectal, and gastric cancer, suggesting its role in the proliferation, invasion, and metastasis of these tumors.

Storage

Storage:

Store at -80°C.

Storage Buffer:

PBS Only

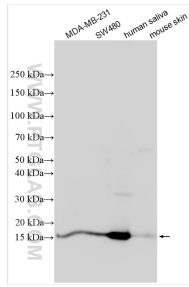
For technical support and original validation data for this product please contact:

T: 1 (888) 4PTGLAB (1-888-478-4522) (toll free
in USA), or 1(312) 455-8498 (outside USA)

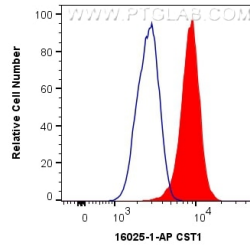
E: proteintech@ptglab.com
W: ptglab.com

This product is exclusively available under Proteintech Group brand and is not available to purchase from any other manufacturer.

Selected Validation Data



Various lysates were subjected to SDS PAGE followed by western blot with 16025-1-AP (CST1 antibody) at dilution of 1:4000 incubated at room temperature for 1.5 hours. This data was developed using the same antibody clone with 16025-1-PBS in a different storage buffer formulation.



1×10^6 MCF-7 cells were intracellularly stained with 0.4 ug Anti-Human CST1 (16025-1-AP) and CoraLite®488-Conjugated AffiniPure Goat Anti-Rabbit IgG(H+L) at dilution 1:1000 (red), or 0.4 ug Isotype Control. Cells were fixed with 4% PFA and permeabilized with Flow Cytometry Perm Buffer (PF00011-C). This data was developed using the same antibody clone with 16025-1-PBS in a different storage buffer formulation.