

For Research Use Only

# S100A1 Polyclonal antibody

Catalog Number: 16027-1-AP

Featured Product

6 Publications



## Basic Information

<b>Catalog Number:</b> 16027-1-AP	<b>GenBank Accession Number:</b> BC014392	<b>Purification Method:</b> Antigen affinity purification
<b>Size:</b> 150ul , Concentration: 600 µg/ml by Nanodrop and 327 µg/ml by Bradford method using BSA as the standard;	<b>GeneID (NCBI):</b> 6271	<b>Recommended Dilutions:</b> WB 1:500-1:1000 IHC 1:50-1:500 IF 1:50-1:500
<b>Source:</b> Rabbit	<b>Full Name:</b> S100 calcium binding protein A1	
<b>Isotype:</b> IgG	<b>Calculated MW:</b> 94 aa, 11 kDa	
<b>Immunogen Catalog Number:</b> AG8871	<b>Observed MW:</b> 10 kDa	

## Applications

### Tested Applications:

IF, IHC, WB, ELISA

### Cited Applications:

IF, IHC, WB

### Species Specificity:

human, mouse, rat

### Cited Species:

human, rat

**Note-IHC: suggested antigen retrieval with TE buffer pH 9.0; (\*) Alternatively, antigen retrieval may be performed with citrate buffer pH 6.0**

### Positive Controls:

**WB** : human heart tissue,

**IHC** : human malignant melanoma tissue, human kidney tissue, human ovary tumor tissue, human appendicitis tissue, human tonsillitis tissue, rat brain tissue, human thyroid cancer tissue

**IF** : human ovary cancer tissue,

## Background Information

### Notable Publications

Author	Pubmed ID	Journal	Application
Mosi K Bennett	24842913	Circ Heart Fail	WB
Wenkai Yang	34366855	Front Pharmacol	WB
Ye Bai	36524376	Mol Med Rep	WB,IF

## Storage

### Storage:

Store at -20°C. Stable for one year after shipment.

### Storage Buffer:

PBS with 0.02% sodium azide and 50% glycerol pH 7.3.

Aliquoting is unnecessary for -20°C storage

\*\*\* 20ul sizes contain 0.1% BSA

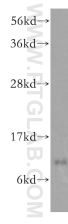
For technical support and original validation data for this product please contact:

T: 1 (888) 4PTGLAB (1-888-478-4522) (toll free in USA), or 1(312) 455-8498 (outside USA)

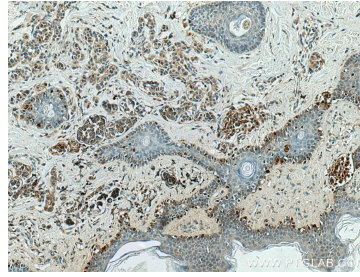
E: proteintech@ptglab.com  
W: ptglab.com

This product is exclusively available under Proteintech Group brand and is not available to purchase from any other manufacturer.

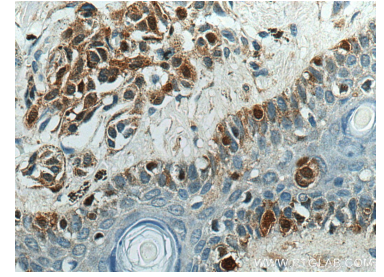
## Selected Validation Data



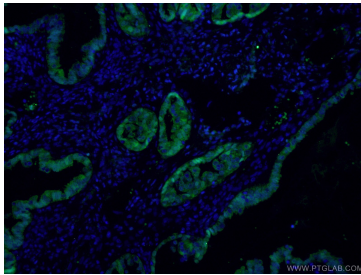
human heart tissue were subjected to SDS PAGE followed by western blot with 16027-1-AP (S100A1 antibody) at dilution of 1:500 incubated at room temperature for 1.5 hours.



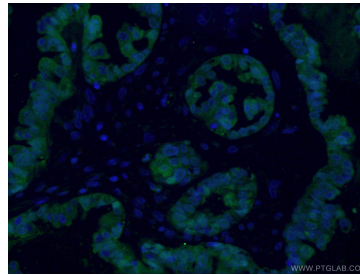
Immunohistochemical analysis of paraffin-embedded human malignant melanoma tissue slide using 16027-1-AP (S100A1 antibody) at dilution of 1:200 (under 10x lens)..



Immunohistochemical analysis of paraffin-embedded human malignant melanoma tissue slide using 16027-1-AP (S100A1 antibody) at dilution of 1:200 (under 40x lens)..



Immunofluorescent analysis of (4% PFA) fixed human ovary cancer cells using 16027-1-AP (S100A1 antibody) at dilution of 1:50 and Alexa Fluor 488-Conjugated AffiniPure Goat Anti-Rabbit IgG(H+L).



Immunofluorescent analysis of (4% PFA) fixed human ovary cancer cells using 16027-1-AP (S100A1 antibody) at dilution of 1:50 and Alexa Fluor 488-Conjugated AffiniPure Goat Anti-Rabbit IgG(H+L).