

For Research Use Only

S100A1 Polyclonal antibody, PBS Only

Catalog Number: 16027-1-PBS

Featured Product



Basic Information

Catalog Number:

16027-1-PBS

Size:

100ug, Concentration: 1 mg/ml by Nanodrop;

Source:

Rabbit

Isotype:

IgG

Immunogen Catalog Number:

AG8871

GenBank Accession Number:

BC014392

GeneID (NCBI):

6271

UNIPROT ID:

P23297

Full Name:

S100 calcium binding protein A1

Calculated MW:

94 aa, 11 kDa

Observed MW:

10 kDa

Purification Method:

Antigen affinity purification

Applications

Tested Applications:

WB, IHC, IF-P, Indirect ELISA

Species Specificity:

human, mouse, rat

Background Information

S100A1 belongs to the S100 protein family, which represents the largest group among EF-hand Ca²⁺-binding proteins exclusively expressed in vertebrates. S100 proteins have been described as central regulators of numerous cellular and molecular processes, often operating in a cell-type-specific manner (PMID: 11991838). S100A1 is a central regulator of Ca²⁺-driven networks that orchestrates compartmentalized Ca²⁺ fluxes in the heart (PMID: 22336719, PMID: 26021637). S100A1 is primarily expressed in cardiomyocytes (CM). Endothelial cells (EC) express significantly lower S100A1 levels, whereas fibroblasts do not express S100A1 (PMID: 38641766).

Storage

Storage:

Store at -80°C.

Storage Buffer:

PBS only, pH7.3

For technical support and original validation data for this product please contact:

T: 1 (888) 4PTGLAB (1-888-478-4522) (toll free in USA), or 1(312) 455-8498 (outside USA)

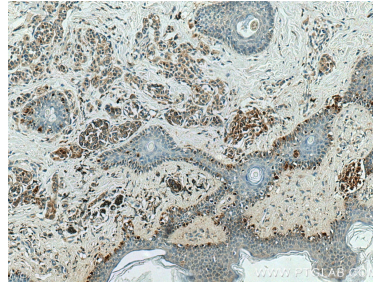
E: proteintech@ptglab.com
W: ptglab.com

This product is exclusively available under Proteintech Group brand and is not available to purchase from any other manufacturer.

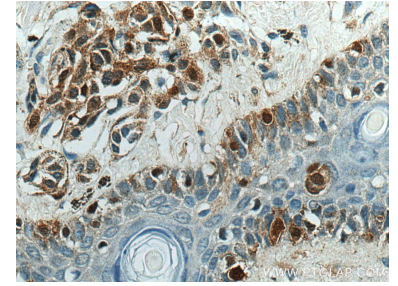
Selected Validation Data



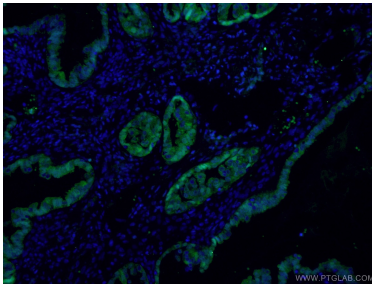
human heart tissue were subjected to SDS PAGE followed by western blot with 16027-1-AP (S100A1 antibody) at dilution of 1:500 incubated at room temperature for 1.5 hours. This data was developed using the same antibody clone with 16027-1-PBS in a different storage buffer formulation.



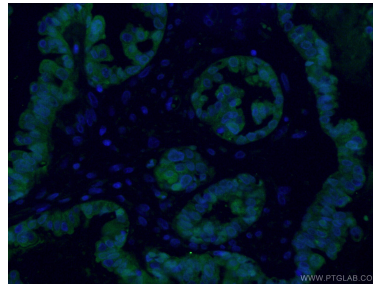
Immunohistochemical analysis of paraffin-embedded human malignant melanoma tissue slide using 16027-1-AP (S100A1 antibody) at dilution of 1:200 (under 10x lens).. This data was developed using the same antibody clone with 16027-1-PBS in a different storage buffer formulation.



Immunohistochemical analysis of paraffin-embedded human malignant melanoma tissue slide using 16027-1-AP (S100A1 antibody) at dilution of 1:200 (under 40x lens).. This data was developed using the same antibody clone with 16027-1-PBS in a different storage buffer formulation.



Immunofluorescent analysis of (4% PFA) fixed human ovary cancer cells using 16027-1-AP (S100A1 antibody) at dilution of 1:50 and Alexa Fluor 488-Conjugated AffiniPure Goat Anti-Rabbit IgG(H+L). This data was developed using the same antibody clone with 16027-1-PBS in a different storage buffer formulation.



Immunofluorescent analysis of (4% PFA) fixed human ovary cancer cells using 16027-1-AP (S100A1 antibody) at dilution of 1:50 and Alexa Fluor 488-Conjugated AffiniPure Goat Anti-Rabbit IgG(H+L). This data was developed using the same antibody clone with 16027-1-PBS in a different storage buffer formulation.