

For Research Use Only

RNF2 Polyclonal antibody, PBS Only

Catalog Number: 16031-1-PBS

Featured Product



Basic Information

Catalog Number:

16031-1-PBS

Size:

100ug, Concentration: 1 mg/ml by Nanodrop;

Source:

Rabbit

Isotype:

IgG

Immunogen Catalog Number:

AG8900

GenBank Accession Number:

BC012583

GeneID (NCBI):

6045

UNIPROT ID:

Q99496

Full Name:

ring finger protein 2

Calculated MW:

336 aa, 38 kDa

Observed MW:

38 kDa

Purification Method:

Antigen affinity purification

Applications

Tested Applications:

WB, IF/ICC, IP, Indirect ELISA

Species Specificity:

human, mouse, rat

Background Information

RNF2 (also known as ding, Ring1B or Ring2) is a member of the Ring finger protein family, which functions as E3 ubiquitin ligase for monoubiquitination of histone H2A at lysine 119 (H2AK119ub). Many studies have demonstrated that overexpressed RNF2 was involved in the pathological progression of multiple cancers and has an impact on their clinical features. For instance, the upregulated expression level of RNF2 is positively correlated with the occurrence and progression of hepatocellular carcinoma, melanoma, prostate cancer, breast cancer, pancreatic cancer, gastric cancer, and bladder urothelial carcinoma, as well as with the radioresistance of lung cancer and chemoresistance of ovarian cancer (PMID: 33400276). The molecular weight of RNF2 is 38 kDa.

Storage

Storage:

Store at -80°C.

Storage Buffer:

PBS Only

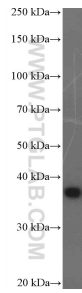
For technical support and original validation data for this product please contact:

T: 1 (888) 4PTGLAB (1-888-478-4522) (toll free in USA), or 1(312) 455-8498 (outside USA)

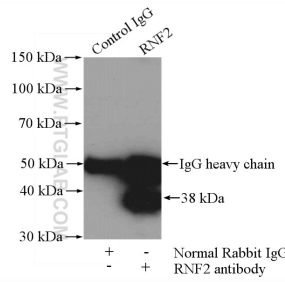
E: proteintech@ptglab.com
W: ptglab.com

This product is exclusively available under Proteintech Group brand and is not available to purchase from any other manufacturer.

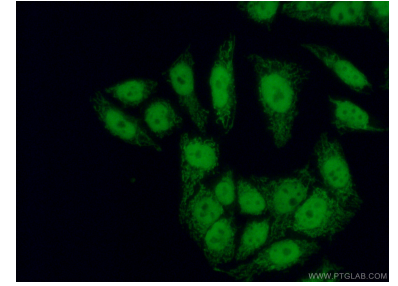
Selected Validation Data



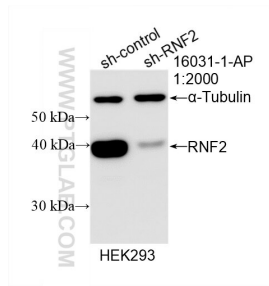
K-562 cells were subjected to SDS PAGE followed by western blot with 16031-1-AP (RNF2 Antibody) at dilution of 1:2000 incubated at room temperature for 1.5 hours. This data was developed using the same antibody clone with 16031-1-PBS in a different storage buffer formulation.



IP result of anti-RNF2 (IP:16031-1-AP, 4 μ g; Detection:16031-1-AP 1:800) with K-562 cells lysate 1200 μ g. This data was developed using the same antibody clone with 16031-1-PBS in a different storage buffer formulation.



Immunofluorescent analysis of (4% PFA) fixed HeLa cells using 16031-1-AP (RNF2 antibody) at dilution of 1:50 and Alexa Fluor 488-conjugated AffiniPure Goat Anti-Rabbit IgG(H+L). This data was developed using the same antibody clone with 16031-1-PBS in a different storage buffer formulation.



WB result of RNF2 antibody (16031-1-AP; 1:2000; incubated at room temperature for 1.5 hours) with sh-Control and sh-RNF2 transfected HEK-293 cells. This data was developed using the same antibody clone with 16031-1-PBS in a different storage buffer formulation.