

For Research Use Only

SERPINB2 Polyclonal antibody

Catalog Number: 16035-1-AP

6 Publications



Basic Information

Catalog Number:

16035-1-AP

Size:

150ul, Concentration: 400 ug/ml by Nanodrop;

Source:

Rabbit

Isotype:

IgG

Immunogen Catalog Number:

AG8906

GenBank Accession Number:

BC012609

GeneID (NCBI):

5055

UNIPROT ID:

P05120

Full Name:

serpin peptidase inhibitor, clade B (ovalbumin), member 2

Calculated MW:

415 aa, 47 kDa

Observed MW:

45-47 kDa

Purification Method:

Antigen affinity purification

Recommended Dilutions:

WB 1:500-1:1000

IP 0.5-4.0 ug for 1.0-3.0 mg of total protein lysate

Applications

Tested Applications:

WB, IP, ELISA

Cited Applications:

WB, IHC

Species Specificity:

human

Cited Species:

human

Positive Controls:

WB : A431 cells, Jurkat cells

IP : Jurkat cells,

Notable Publications

Author	Pubmed ID	Journal	Application
Chunling Liu	26338969	Oncotarget	WB, IHC
Chia-Yi Su	26230665	PLoS One	IHC
Dan Zhang	30031066	J Proteomics	WB

Storage

Storage:

Store at -20°C. Stable for one year after shipment.

Storage Buffer:

PBS with 0.02% sodium azide and 50% glycerol pH 7.3.

Aliquoting is unnecessary for -20°C storage

*** 20ul sizes contain 0.1% BSA

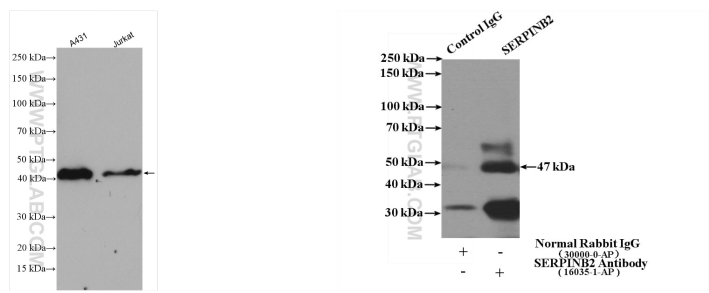
For technical support and original validation data for this product please contact:

T: 1 (888) 4PTGLAB (1-888-478-4522) (toll free in USA), or 1(312) 455-8498 (outside USA)

E: proteintech@ptglab.com
W: ptglab.com

This product is exclusively available under Proteintech Group brand and is not available to purchase from any other manufacturer.

Selected Validation Data



Various lysates were subjected to SDS PAGE followed by western blot with 16035-1-AP (SERPINB2 antibody) at dilution of 1:800 incubated at room temperature for 1.5 hours.

IP result of anti-SERPINB2 (IP:16035-1-AP, 4ug; Detection:16035-1-AP 1:300) with Jurkat cells lysate 3600ug.