

For Research Use Only

SerpinB2/PAI-2 Polyclonal antibody, PBS Only

Catalog Number: 16035-1-PBS



Basic Information

Catalog Number:

16035-1-PBS

Size:

100ug, Concentration: 1 mg/ml by
Nanodrop;

Source:

Rabbit

Isotype:

IgG

Immunogen Catalog Number:

AG8906

GenBank Accession Number:

BC012609

GeneID (NCBI):

5055

UNIPROT ID:

P05120

Full Name:

serpin peptidase inhibitor, clade B
(ovalbumin), member 2

Calculated MW:

415 aa, 47 kDa

Observed MW:

45-47 kDa

Purification Method:

Antigen affinity purification

Applications

Tested Applications:

WB, IHC, IP, Indirect ELISA

Species Specificity:

human

Background Information

SerpinB2, a plasminogen activator inhibitor-2 (PAI-2), is a serine protease inhibitor of the serpin superfamily that inactivates tissue plasminogen activator (tPA) and urokinase plasminogen activator (uPA) (PMID: 7506655). SerpinB2 may have both pro-tumor and anti-tumor effects. High expression of tumor cell-associated SerpinB2 facilitates breast cancer cell survival and metastasis (PMID: 24581498; PMID: 28427146), while SerpinB2 expression by breast cancer cells significantly inhibits metastasis by inhibiting extracellular uPA (PMID: 24644264; PMID: 28346421).

Storage

Storage:

Store at -80°C.

Storage Buffer:

PBS only, pH7.3

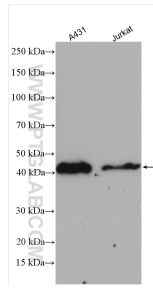
For technical support and original validation data for this product please contact:

T: 1 (888) 4PTGLAB (1-888-478-4522) (toll free
in USA), or 1(312) 455-8498 (outside USA)

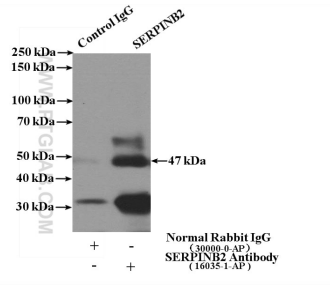
E: proteintech@ptglab.com
W: ptglab.com

This product is exclusively available under Proteintech Group brand and is not available to purchase from any other manufacturer.

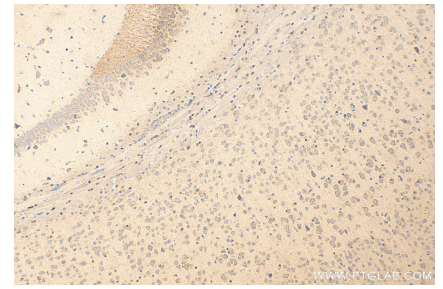
Selected Validation Data



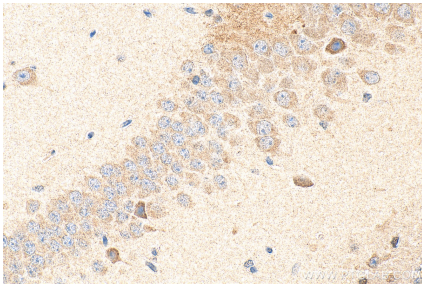
Various lysates were subjected to SDS PAGE followed by western blot with 16035-1-AP (SERPINB2 antibody) at dilution of 1:800 incubated at room temperature for 1.5 hours. This data was developed using the same antibody clone with 16035-1-PBS in a different storage buffer formulation.



IP result of anti-SERPINB2 (IP:16035-1-AP, 4ug; Detection:16035-1-AP 1:300) with Jurkat cells lysate 3600ug. This data was developed using the same antibody clone with 16035-1-PBS in a different storage buffer formulation.



Immunohistochemical analysis of paraffin-embedded mouse brain tissue slide using 16035-1-AP (SERPINB2 antibody) at dilution of 1:200 (under 10x lens). Heat mediated antigen retrieval with Tris-EDTA buffer (pH 9.0). This data was developed using the same antibody clone with 16035-1-PBS in a different storage buffer formulation.



Immunohistochemical analysis of paraffin-embedded mouse brain tissue slide using 16035-1-AP (SERPINB2 antibody) at dilution of 1:200 (under 40x lens). Heat mediated antigen retrieval with Tris-EDTA buffer (pH 9.0). This data was developed using the same antibody clone with 16035-1-PBS in a different storage buffer formulation.