

For Research Use Only

SOCS2 Polyclonal antibody, PBS Only

Catalog Number:16038-1-PBS



Basic Information

Catalog Number:

16038-1-PBS

Size:

100ug , Concentration: 1 mg/ml by Nanodrop;

Source:

Rabbit

Isotype:

IgG

Immunogen Catalog Number:

AG8909

GenBank Accession Number:

BC010399

GeneID (NCBI):

8835

UNIPROT ID:

O14508

Full Name:

suppressor of cytokine signaling 2

Calculated MW:

198 aa, 22 kDa

Observed MW:

22 kDa

Purification Method:

Antigen affinity purification

Applications

Tested Applications:

WB, Indirect ELISA

Species Specificity:

human

Background Information

SOCS2 is the substrate-recognition component of a cullin-5-RING E3 ubiquitin-protein ligase complex (ECS complex, also named CRL5 complex), which mediates the ubiquitination and subsequent proteasomal degradation of target proteins, such as EPOR and GHR (PMID: 11781573; 21980433; 25505247; 31182716; 34857742).

Storage

Storage:

Store at -80°C.

Storage Buffer:

PBS only, pH7.3

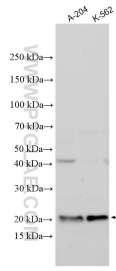
For technical support and original validation data for this product please contact:

T: 1 (888) 4PTGLAB (1-888-478-4522) (toll free in USA), or 1(312) 455-8498 (outside USA)

E: proteintech@ptglab.com
W: ptglab.com

This product is exclusively available under Proteintech Group brand and is not available to purchase from any other manufacturer.

Selected Validation Data



Various lysates were subjected to SDS PAGE followed by western blot with 16038-1-AP (SOCS2 antibody) at dilution of 1:1500 incubated at room temperature for 1.5 hours. This data was developed using the same antibody clone with 16038-1-PBS in a different storage buffer formulation.