

For Research Use Only

# C20orf195 Polyclonal antibody

Catalog Number: 16040-1-AP



## Basic Information

|  |   |   |
|--|---|---|
| <b>Catalog Number:</b><br>16040-1-AP   | <b>GenBank Accession Number:</b><br>BC000912              | <b>Purification Method:</b><br>Antigen affinity purification                        |
| <b>Size:</b><br>150ul , Concentration: 400 µg/ml by Nanodrop and 280 µg/ml by Bradford method using BSA as the standard; | <b>GeneID (NCBI):</b><br>79025                            | <b>Recommended Dilutions:</b><br>WB 1:200-1:1000<br>IHC 1:20-1:200<br>IF 1:20-1:200 |
| <b>Source:</b><br>Rabbit   | <b>Full Name:</b><br>chromosome 20 open reading frame 195 |   |
| <b>Isotype:</b><br>IgG   | <b>Calculated MW:</b><br>37 kDa                           |   |
| <b>Immunogen Catalog Number:</b><br>AG8914   | <b>Observed MW:</b><br>37 kDa                             |   |

## Applications

### Tested Applications:

IF, IHC, WB, ELISA

### Species Specificity:

human, mouse, rat

**Note-IHC: suggested antigen retrieval with TE buffer pH 9.0; (\*) Alternatively, antigen retrieval may be performed with citrate buffer pH 6.0**

### Positive Controls:

WB : HepG2 cells, SMMC-7721 cells

IHC : human prostate cancer tissue,

IF : HepG2 cells,

## Background Information

### Storage

#### Storage:

Store at -20°C. Stable for one year after shipment.

#### Storage Buffer:

PBS with 0.02% sodium azide and 50% glycerol pH 7.3.

Aliquoting is unnecessary for -20°C storage

\*\*\* 20ul sizes contain 0.1% BSA

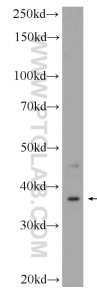
For technical support and original validation data for this product please contact:

T: 1 (888) 4PTGLAB (1-888-478-4522) (toll free in USA), or 1(312) 455-8498 (outside USA)

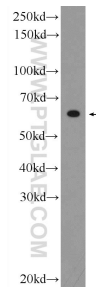
E: proteintech@ptglab.com  
W: ptglab.com

This product is exclusively available under Proteintech Group brand and is not available to purchase from any other manufacturer.

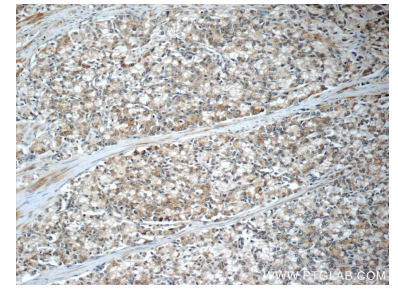
## Selected Validation Data



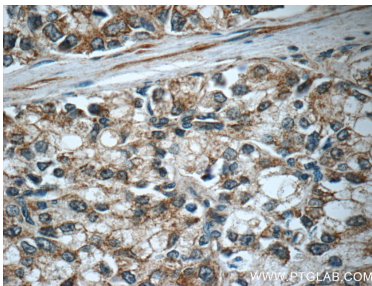
HepG2 cells were subjected to SDS PAGE followed by western blot with 16040-1-AP (C20orf195 Antibody) at dilution of 1:300 incubated at 4 degree celsius over night.



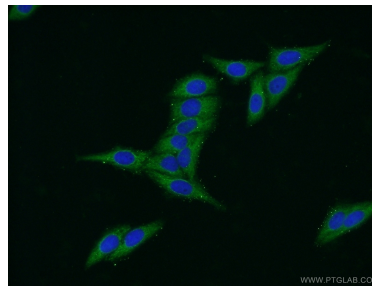
SMMC-7721 cells were subjected to SDS PAGE followed by western blot with 16040-1-AP (C20orf195 Antibody) at dilution of 1:300 incubated at room temperature for 1.5 hours.



Immunohistochemical analysis of paraffin-embedded human prostate cancer tissue slide using 16040-1-AP (C20orf195 Antibody) at dilution of 1:50 (under 10x lens).



Immunohistochemical analysis of paraffin-embedded human prostate cancer tissue slide using 16040-1-AP (C20orf195 Antibody) at dilution of 1:50 (under 40x lens).



Immunofluorescent analysis of HepG2 cells using 16040-1-AP (C20orf195 antibody) at dilution of 1:50 and Alexa Fluor 488-conjugated AffiniPure Goat Anti-Rabbit IgG(H+L).