

For Research Use Only

BCCIP Polyclonal antibody, PBS Only

Catalog Number: 16043-1-PBS

Featured Product



Basic Information

Catalog Number:

16043-1-PBS

Size:

100ug, Concentration: 1 mg/ml by Nanodrop;

Source:

Rabbit

Isotype:

IgG

Immunogen Catalog Number:

AG8934

GenBank Accession Number:

BC009771

GeneID (NCBI):

56647

UNIPROT ID:

Q9P287

Full Name:

BRCA2 and CDKN1A interacting protein

Calculated MW:

314 aa, 36 kDa

Observed MW:

50-58 kDa

Purification Method:

Antigen affinity purification

Applications

Tested Applications:

WB, IF/ICC, IP, Indirect ELISA

Species Specificity:

human, mouse, rat

Background Information

BCCIP (or TOK1) is isolated as a BRCA2- and CDKN1A (p21)-interacting protein and is implicated in homologous recombination (HR) pathway and inhibition of DNA replication stress. BCCIP is an evolutionarily conserved nuclear protein with multiple interacting domains. BCCIP deficiency in mice impaired embryonic and postnatal neural development, causing severe ataxia, cerebral and cerebellar defects, and microcephaly, which are associated with spontaneous DNA damage and subsequent cell death in the proliferative cell populations of the neural system during embryogenesis. BCCIP is essential for maintaining the transactivation activity of wild type p53 suggesting a potential role of BCCIP in cancer etiology.

Storage

Storage:

Store at -80°C.

Storage Buffer:

PBS Only

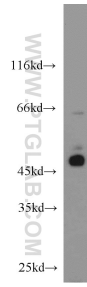
For technical support and original validation data for this product please contact:

T: 1 (888) 4PTGLAB (1-888-478-4522) (toll free in USA), or 1(312) 455-8498 (outside USA)

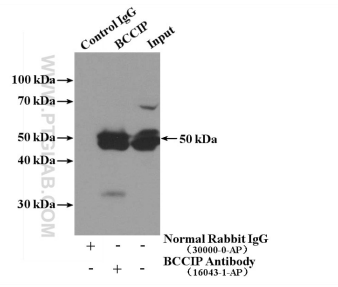
E: proteintech@ptglab.com
W: ptglab.com

This product is exclusively available under Proteintech Group brand and is not available to purchase from any other manufacturer.

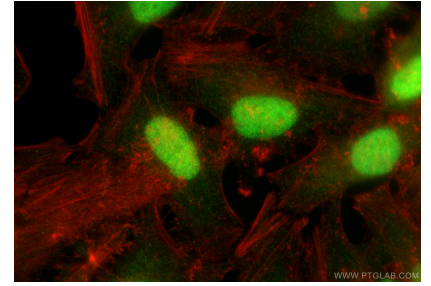
Selected Validation Data



HeLa cells were subjected to SDS PAGE followed by western blot with 16043-1-AP (BCCIP antibody) at dilution of 1:800 incubated at room temperature for 1.5 hours. This data was developed using the same antibody clone with 16043-1-PBS in a different storage buffer formulation.



IP result of anti-BCCIP (IP:16043-1-AP, 4ug; Detection:16043-1-AP 1:800) with HeLa cells lysate 3200ug. This data was developed using the same antibody clone with 16043-1-PBS in a different storage buffer formulation.



Immunofluorescent analysis of (4% PFA) fixed HeLa cells using BCCIP antibody (16043-1-AP) at dilution of 1:800 and CoraLite@488-Conjugated Goat Anti-Rabbit IgG(H+L) (SA00013-2), CL594-Phalloidin (red). This data was developed using the same antibody clone with 16043-1-PBS in a different storage buffer formulation.