

For Research Use Only

Myoglobin Polyclonal antibody

Catalog Number: 16048-1-AP

3 Publications



Basic Information

Catalog Number:

16048-1-AP

Size:

150ul, Concentration: 750 µg/ml by Nanodrop;

Source:

Rabbit

Isotype:

IgG

Immunogen Catalog Number:

AG9000

GenBank Accession Number:

BC014547

GeneID (NCBI):

4151

Full Name:

myoglobin

Calculated MW:

154 aa, 17 kDa

Observed MW:

18 kDa

Purification Method:

Antigen affinity purification

Recommended Dilutions:

WB 1:2000-1:12000

IP 0.5-4.0 µg for 1.0-3.0 mg of total protein lysate

IHC 1:20-1:200

Applications

Tested Applications:

IHC, IP, WB, ELISA

Cited Applications:

WB

Species Specificity:

human, mouse, rat

Cited Species:

human, mouse

Positive Controls:

WB: mouse heart tissue, mouse skeletal muscle, rat heart, rat skeletal muscle

IP: mouse skeletal muscle tissue,

IHC: human heart tissue,

Note-IHC: suggested antigen retrieval with TE buffer pH 9.0; (*) Alternatively, antigen retrieval may be performed with citrate buffer pH 6.0

Background Information

Myoglobin is a cytoplasmic hemoprotein that is expressed primarily in cardiomyocytes and oxidative skeletal muscle fibers, functioning on facilitating oxygen transport and modulating nitric oxide homeostasis within cardiac and skeletal myocytes. Recent studies indicated that myoglobin was also expressed in non-muscle tissues. This antibody well recognized endogenous myoglobin in muscle lysates.

Notable Publications

Author	Pubmed ID	Journal	Application
Yuki Tamura	34523264	Physiol Rep	WB
Song Huang	35998371	Appl Physiol Nutr Metab	WB
Jian Wang	38242315	J Invest Dermatol	WB

Storage

Storage:

Store at -20°C. Stable for one year after shipment.

Storage Buffer:

PBS with 0.02% sodium azide and 50% glycerol pH 7.3.

Aliquoting is unnecessary for -20°C storage

*** 20ul sizes contain 0.1% BSA

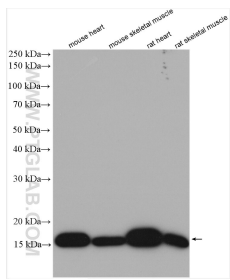
For technical support and original validation data for this product please contact:

T: 1 (888) 4PTGLAB (1-888-478-4522) (toll free in USA), or 1(312) 455-8498 (outside USA)

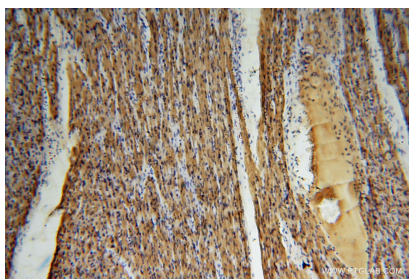
E: proteintech@ptglab.com
W: ptglab.com

This product is exclusively available under Proteintech Group brand and is not available to purchase from any other manufacturer.

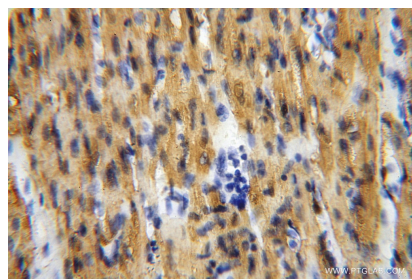
Selected Validation Data



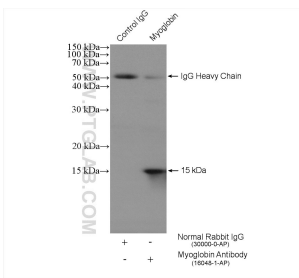
Various lysates were subjected to SDS PAGE followed by western blot with 16048-1-AP (Myoglobin antibody) at dilution of 1:6000 incubated at room temperature for 1.5 hours.



Immunohistochemical analysis of paraffin-embedded human heart using 16048-1-AP (Myoglobin antibody) at dilution of 1:100 (under 10x lens).



Immunohistochemical analysis of paraffin-embedded human heart using 16048-1-AP (Myoglobin antibody) at dilution of 1:100 (under 40x lens).



IP result of anti-Myoglobin(IP:16048-1-AP, 4ug; Detection:16048-1-AP 1:1000) with mouse skeletal muscle tissue lysate 2000 ug.