

For Research Use Only

SULT1B1 Polyclonal antibody

Catalog Number: 16050-1-AP



Basic Information

Catalog Number: 16050-1-AP	GenBank Accession Number: BC010895	Purification Method: Antigen affinity purification
Size: 150ul , Concentration: 400 µg/ml by Nanodrop;	GeneID (NCBI): 27284	Recommended Dilutions: WB 1:2000-1:10000 IHC 1:50-1:500
Source: Rabbit	Full Name: sulfotransferase family, cytosolic, 1B, member 1	
Isotype: IgG	Calculated MW: 296 aa, 35 kDa	
Immunogen Catalog Number: AG9009	Observed MW: 35 kDa	

Applications

Tested Applications:

IHC, WB, ELISA

Species Specificity:

human, mouse, rat

Note-IHC: suggested antigen retrieval with TE buffer pH 9.0; (*) Alternatively, antigen retrieval may be performed with citrate buffer pH 6.0

Positive Controls:

WB : mouse colon tissue, human colon tissue, human liver tissue, mouse liver tissue, rat liver tissue

IHC : human colon cancer tissue, human liver cancer tissue

Background Information

Sulfotransferase 1B1 (SULT1B1) is expressed at highest levels throughout the human colon and small intestine but can also be found at moderate levels in human liver, kidney, and white blood cells (PMID: 28084139). Certain SULT1B1 SNPs may influence the activity of thyroid hormones and the mutagenicity of polycyclic aromatic hydrocarbons (PMID: 34107842).

Storage

Storage:

Store at -20°C. Stable for one year after shipment.

Storage Buffer:

PBS with 0.02% sodium azide and 50% glycerol pH 7.3.

Aliquoting is unnecessary for -20°C storage

*** 20ul sizes contain 0.1% BSA

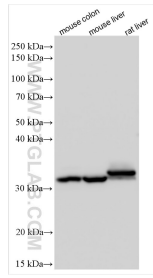
For technical support and original validation data for this product please contact:

T: 1 (888) 4PTGLAB (1-888-478-4522) (toll free in USA), or 1(312) 455-8498 (outside USA)

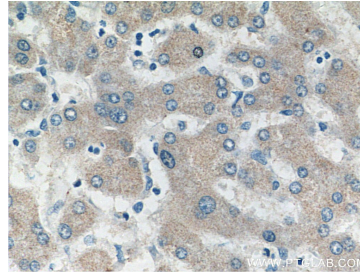
E: proteintech@ptglab.com
W: ptglab.com

This product is exclusively available under Proteintech Group brand and is not available to purchase from any other manufacturer.

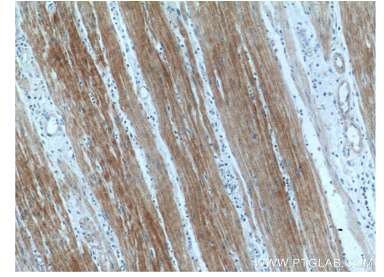
Selected Validation Data



Various lysates were subjected to SDS PAGE followed by western blot with 16050-1-AP (SULT1B1 antibody) at dilution of 1:5000 incubated at room temperature for 1.5 hours.



Immunohistochemical analysis of paraffin-embedded human liver cancer tissue slide using 16050-1-AP (SULT1B1 antibody) at dilution of 1:200 (under 40x lens).



Immunohistochemical analysis of paraffin-embedded human colon cancer tissue slide using 16050-1-AP (SULT1B1 antibody) at dilution of 1:200 (under 10x lens).