

For Research Use Only

# MYLPF Polyclonal antibody

Catalog Number: 16052-1-AP **2 Publications**



## Basic Information

<b>Catalog Number:</b> 16052-1-AP	<b>GenBank Accession Number:</b> BC012571	<b>Purification Method:</b> Antigen affinity purification
<b>Size:</b> 150ul , Concentration: 400 µg/ml by Nanodrop and 253 µg/ml by Bradford method using BSA as the standard;	<b>GeneID (NCBI):</b> 29895	<b>Recommended Dilutions:</b> WB 1:500-1:2000 IHC 1:20-1:200
<b>Source:</b> Rabbit	<b>Full Name:</b> myosin light chain, phosphorylatable, fast skeletal muscle	
<b>Isotype:</b> IgG	<b>Calculated MW:</b> 169 aa, 19 kDa	
<b>Immunogen Catalog Number:</b> AG9013	<b>Observed MW:</b> 19 kDa	

## Applications

<b>Tested Applications:</b> IHC, WB, ELISA	<b>Positive Controls:</b> WB : mouse skeletal muscle tissue, IHC : human skeletal muscle tissue,
<b>Cited Applications:</b> WB	
<b>Species Specificity:</b> human, mouse, rat	
<b>Cited Species:</b> mouse	

**Note-IHC: suggested antigen retrieval with TE buffer pH 9.0; (\*) Alternatively, antigen retrieval may be performed with citrate buffer pH 6.0**

## Background Information

### Notable Publications

Author	Pubmed ID	Journal	Application
Magdalena A Cichewicz	30037979	Mol Cell Biol	WB
Ryohei Oya	35163674	Int J Mol Sci	WB

## Storage

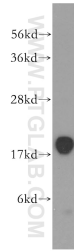
**Storage:**  
Store at -20°C. Stable for one year after shipment.  
**Storage Buffer:**  
PBS with 0.02% sodium azide and 50% glycerol pH 7.3.  
Aliquoting is unnecessary for -20°C storage

**\*\*\* 20ul sizes contain 0.1% BSA**

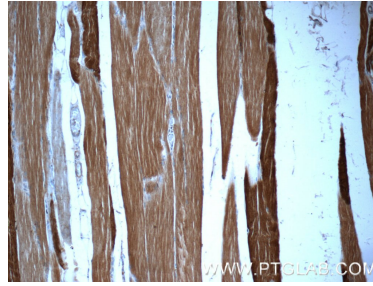
For technical support and original validation data for this product please contact:  
T: 1 (888) 4PTGLAB (1-888-478-4522) (toll free in USA), or 1(312) 455-8498 (outside USA)  
E: proteintech@ptglab.com  
W: ptglab.com

**This product is exclusively available under Proteintech Group brand and is not available to purchase from any other manufacturer.**

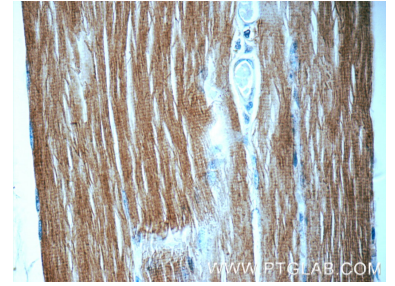
## Selected Validation Data



mouse skeletal muscle tissue were subjected to SDS PAGE followed by western blot with 16052-1-AP (MYL2 antibody) at dilution of 1:400 incubated at room temperature for 1.5 hours.



Immunohistochemical analysis of paraffin-embedded human skeletal muscle tissue slide using 16052-1-AP (MYL2 Antibody) at dilution of 1:50 (under 10x lens).



Immunohistochemical analysis of paraffin-embedded human skeletal muscle tissue slide using 16052-1-AP (MYL2 Antibody) at dilution of 1:50 (under 40x lens).