

For Research Use Only

ATP6V1C1 Polyclonal antibody

Catalog Number: 16054-1-AP

8 Publications



Basic Information

Catalog Number:

16054-1-AP

Size:

150ul, Concentration: 600 ug/ml by Nanodrop;

Source:

Rabbit

Isotype:

IgG

Immunogen Catalog Number:

AG9020

GenBank Accession Number:

BC010960

GeneID (NCBI):

528

UNIPROT ID:

P21283

Full Name:

ATPase, H⁺ transporting, lysosomal 42kDa, V1 subunit C1

Calculated MW:

382 aa, 44 kDa

Observed MW:

42-44 kDa

Purification Method:

Antigen affinity purification

Recommended Dilutions:

WB 1:1000-1:4000

IHC 1:20-1:200

Applications

Tested Applications:

WB, IHC, ELISA

Cited Applications:

WB, IHC

Species Specificity:

human, mouse, rat

Cited Species:

human, mouse

Note-IHC: suggested antigen retrieval with TE buffer pH 9.0; (*) Alternatively, antigen retrieval may be performed with citrate buffer pH 6.0

Positive Controls:

WB : HeLa cells, NIH/3T3 cells, human brain tissue, human testis tissue, mouse brain tissue, rat brain tissue

IHC : human stomach cancer tissue,

Notable Publications

Author	Pubmed ID	Journal	Application
Jong-Jer Lee	31672277	Biochem Biophys Res Commun	WB
Masashi Watanabe	33082525	Commun Biol	WB
Kie Itoh	29853636	J Biol Chem	WB

Storage

Storage:

Store at -20°C. Stable for one year after shipment.

Storage Buffer:

PBS with 0.02% sodium azide and 50% glycerol pH 7.3.

Aliquoting is unnecessary for -20°C storage

*** 20ul sizes contain 0.1% BSA

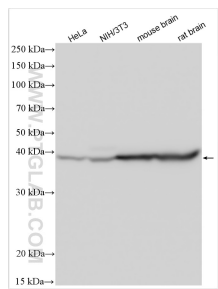
For technical support and original validation data for this product please contact:

T: 1 (888) 4PTGLAB (1-888-478-4522) (toll free in USA), or 1(312) 455-8498 (outside USA)

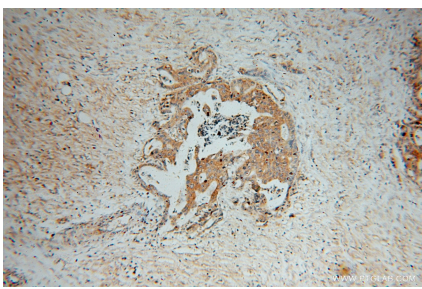
E: proteintech@ptglab.com
W: ptglab.com

This product is exclusively available under Proteintech Group brand and is not available to purchase from any other manufacturer.

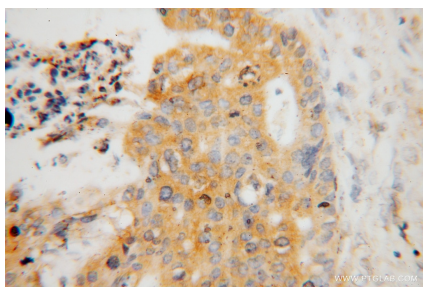
Selected Validation Data



Various lysates were subjected to SDS PAGE followed by western blot with 16054-1-AP (ATP6V1C1 antibody) at dilution of 1:2000 incubated at room temperature for 1.5 hours.



Immunohistochemical analysis of paraffin-embedded human stomach cancer using 16054-1-AP (ATP6V1C1 antibody) at dilution of 1:50 (under 10x lens).



Immunohistochemical analysis of paraffin-embedded human stomach cancer using 16054-1-AP (ATP6V1C1 antibody) at dilution of 1:50 (under 40x lens).