

For Research Use Only

# SAP30L Polyclonal antibody

Catalog Number: 16056-1-AP



## Basic Information

### Catalog Number:

16056-1-AP

### Size:

150ul , Concentration: 900 ug/ml by Nanodrop;

### Source:

Rabbit

### Isotype:

IgG

### Immunogen Catalog Number:

AG9024

### GenBank Accession Number:

BC009829

### GeneID (NCBI):

79685

### UNIPROT ID:

Q9HAJ7

### Full Name:

SAP30-like

### Calculated MW:

183 aa, 21 kDa

### Observed MW:

21-25 kDa

### Purification Method:

Antigen affinity purification

### Recommended Dilutions:

WB 1:500-1:1000

## Applications

### Tested Applications:

WB, ELISA

### Species Specificity:

human, mouse, rat

### Positive Controls:

WB : human peripheral blood platelets, mouse lung tissue, rat lung tissue

## Background Information

SAP30L, also named as NS4ATP2, is one of the key proteins in a multi-subunit protein complex involved in transcriptional regulation via histone deacetylation. SAP30L is an essential component of the Sin3A corepressor complex. The MW migrates to 26-30 kDa with phospho and SUMO modification and may generate complexes.

## Storage

### Storage:

Store at -20°C. Stable for one year after shipment.

### Storage Buffer:

PBS with 0.02% sodium azide and 50% glycerol pH 7.3.

Aliquoting is unnecessary for -20°C storage

\*\*\* 20ul sizes contain 0.1% BSA

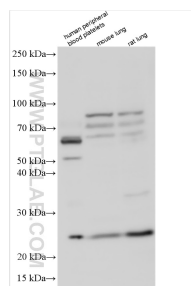
For technical support and original validation data for this product please contact:

T: 1 (888) 4PTGLAB (1-888-478-4522) (toll free in USA), or 1(312) 455-8498 (outside USA)

E: [proteintech@ptglab.com](mailto:proteintech@ptglab.com)  
W: [ptglab.com](http://ptglab.com)

This product is exclusively available under Proteintech Group brand and is not available to purchase from any other manufacturer.

## Selected Validation Data



Various lysates were subjected to SDS PAGE followed by western blot with 16056-1-AP (SAP30L antibody) at dilution of 1:500 incubated at room temperature for 1.5 hours.