

For Research Use Only

PDCL Polyclonal antibody

Catalog Number: 16057-1-AP

1 Publications



Basic Information

Catalog Number:

16057-1-AP

Size:

150ul , Concentration: 400 ug/ml by Nanodrop;

Source:

Rabbit

Isotype:

IgG

Immunogen Catalog Number:

AG9029

GenBank Accession Number:

BC017227

GeneID (NCBI):

5082

UNIPROT ID:

Q13371

Full Name:

phosducin-like

Calculated MW:

301 aa, 34 kDa

Observed MW:

40-42 kDa

Purification Method:

Antigen affinity purification

Recommended Dilutions:

WB 1:1000-1:6000

IHC 1:50-1:500

Applications

Tested Applications:

WB, IHC, ELISA

Cited Applications:

WB

Species Specificity:

human, mouse, rat

Cited Species:

rat

Note-IHC: suggested antigen retrieval with TE buffer pH 9.0; (*) Alternatively, antigen retrieval may be performed with citrate buffer pH 6.0

Positive Controls:

WB : HEK-293 cells, NCI-H1299 cells, Jurkat cells

IHC : human placenta tissue, mouse brain tissue

Notable Publications

Author	Pubmed ID	Journal	Application
Alessandro Esposito	38837572	Acta Physiol (Oxf)	WB

Storage

Storage:

Store at -20°C. Stable for one year after shipment.

Storage Buffer:

PBS with 0.02% sodium azide and 50% glycerol pH 7.3.

Aliquoting is unnecessary for -20°C storage

*** 20ul sizes contain 0.1% BSA

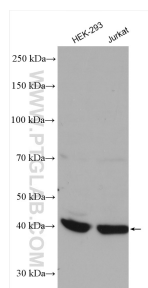
For technical support and original validation data for this product please contact:

T: 1 (888) 4PTGLAB (1-888-478-4522) (toll free in USA), or 1(312) 455-8498 (outside USA)

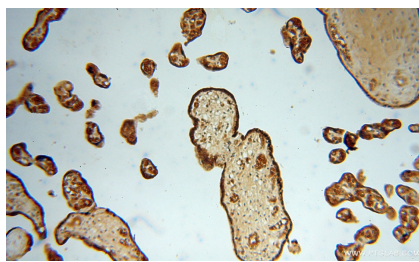
E: proteintech@ptglab.com
W: ptglab.com

This product is exclusively available under Proteintech Group brand and is not available to purchase from any other manufacturer.

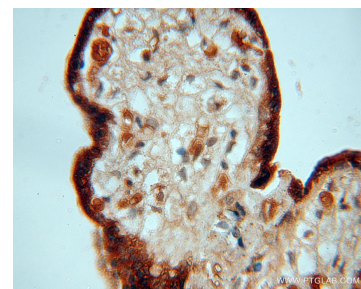
Selected Validation Data



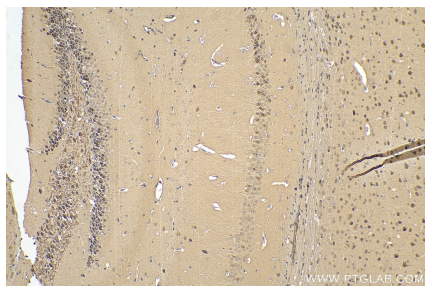
Various lysates were subjected to SDS PAGE followed by western blot with 16057-1-AP (PDCL antibody) at dilution of 1:3000 incubated at room temperature for 1.5 hours.



Immunohistochemical analysis of paraffin-embedded human placenta using 16057-1-AP (PDCL antibody) at dilution of 1:50 (under 10x lens).



Immunohistochemical analysis of paraffin-embedded human placenta using 16057-1-AP (PDCL antibody) at dilution of 1:50 (under 40x lens).



Immunohistochemical analysis of paraffin-embedded mouse brain tissue slide using 16057-1-AP (PDCL antibody) at dilution of 1:500 (under 10x lens). Heat mediated antigen retrieval with Tris-EDTA buffer (pH 9.0).