

For Research Use Only

# GINS1 Polyclonal antibody

Catalog Number: 16061-1-AP



## Basic Information

<b>Catalog Number:</b> 16061-1-AP	<b>GenBank Accession Number:</b> BC012542	<b>Purification Method:</b> Antigen affinity purification
<b>Size:</b> 150ul , Concentration: 550 ug/ml by Nanodrop;	<b>GeneID (NCBI):</b> 9837	<b>Recommended Dilutions:</b> WB 1:1000-1:8000 IHC 1:50-1:500
<b>Source:</b> Rabbit	<b>UNIPROT ID:</b> Q14691	
<b>Isotype:</b> IgG	<b>Full Name:</b> GINS complex subunit 1 (Psf1 homolog)	
<b>Immunogen Catalog Number:</b> AG8895	<b>Calculated MW:</b> 196 aa, 23 kDa <b>Observed MW:</b> 20 kDa	

## Applications

<b>Tested Applications:</b> WB, IHC, ELISA	<b>Positive Controls:</b>
<b>Species Specificity:</b> human, mouse, rat	<b>WB :</b> MCF-7 cells, mouse testis tissue, SH-SY5Y cells, U-251 cells, mouse thymus tissue, rat testis tissue, rat thymus tissue
<b>Note-IHC:</b> suggested antigen retrieval with <b>TE buffer pH 9.0; (*) Alternatively, antigen retrieval may be performed with citrate buffer pH 6.0</b>	<b>IHC :</b> human ovary cancer tissue,

## Background Information

GINS1, also known as Partner of SLD Five 1 (PSF1) is a member of the GINS (Go-Ichi-Nii-San) complex, which plays a vital role in the initiation and elongation of DNA replication (PMID: 34414190). GINS1 was initially found to be predominantly expressed in highly proliferating cells instead of mature cells. Later on, it was found that GINS was involved in the tumorigenesis of various cancers, including breast cancer, colorectal cancer, and hepatocellular carcinoma (PMID: 36065190).

## Storage

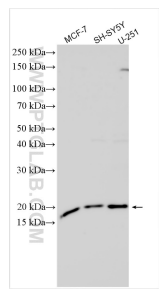
**Storage:**  
Store at -20°C. Stable for one year after shipment.  
**Storage Buffer:**  
PBS with 0.02% sodium azide and 50% glycerol pH 7.3.  
**Aliquoting is unnecessary for -20°C storage**

\*\*\* 20ul sizes contain 0.1% BSA

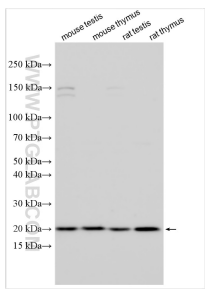
For technical support and original validation data for this product please contact:  
T: 1 (888) 4PTGLAB (1-888-478-4522) (toll free in USA), or 1(312) 455-8498 (outside USA)  
E: [proteintech@ptglab.com](mailto:proteintech@ptglab.com)  
W: [ptglab.com](http://ptglab.com)

This product is exclusively available under Proteintech Group brand and is not available to purchase from any other manufacturer.

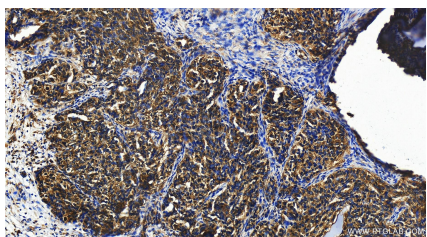
## Selected Validation Data



Various lysates were subjected to SDS PAGE followed by western blot with 16061-1-AP (GINS1 antibody) at dilution of 1:4000 incubated at room temperature for 1.5 hours.



Various lysates were subjected to SDS PAGE followed by western blot with 16061-1-AP (GINS1 antibody) at dilution of 1:1000 incubated at room temperature for 1.5 hours.



Immunohistochemical analysis of paraffin-embedded human ovary cancer tissue slide using 16061-1-AP (GINS1 antibody) at dilution of 1:200 (under 20x lens). Heat mediated antigen retrieval with Tris-EDTA buffer (pH 9.0).