

For Research Use Only

# GIN51 Polyclonal antibody, PBS Only

Catalog Number: 16061-1-PBS



## Basic Information

**Catalog Number:**

16061-1-PBS

**Size:**

100ug, Concentration: 1 mg/ml by Nanodrop;

**Source:**

Rabbit

**Isotype:**

IgG

**Immunogen Catalog Number:**

AG8895

**GenBank Accession Number:**

BC012542

**GeneID (NCBI):**

9837

**UNIPROT ID:**

Q14691

**Full Name:**

GIN5 complex subunit 1 (Psf1 homolog)

**Calculated MW:**

196 aa, 23 kDa

**Observed MW:**

20 kDa

**Purification Method:**

Antigen affinity purification

## Applications

**Tested Applications:**

WB, IHC, Indirect ELISA

**Species Specificity:**

human, mouse, rat

## Background Information

GIN51, also known as Partner of SLD Five 1 (PSF1) is a member of the GIN5 (Go-Ichi-Nii-San) complex, which plays a vital role in the initiation and elongation of DNA replication (PMID: 34414190). GIN51 was initially found to be predominantly expressed in highly proliferating cells instead of mature cells. Later on, it was found that GIN5 was involved in the tumorigenesis of various cancers, including breast cancer, colorectal cancer, and hepatocellular carcinoma (PMID: 36065190).

## Storage

**Storage:**

Store at -80°C.

**Storage Buffer:**

PBS Only

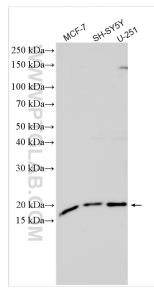
For technical support and original validation data for this product please contact:

T: 1 (888) 4PTGLAB (1-888-478-4522) (toll free in USA), or 1(312) 455-8498 (outside USA)

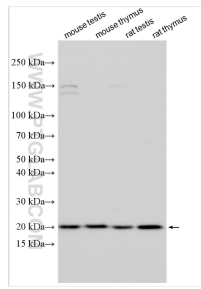
E: [proteintech@ptglab.com](mailto:proteintech@ptglab.com)  
W: [ptglab.com](http://ptglab.com)

**This product is exclusively available under Proteintech Group brand and is not available to purchase from any other manufacturer.**

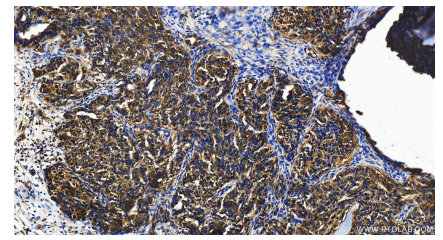
## Selected Validation Data



Various lysates were subjected to SDS PAGE followed by western blot with 16061-1-AP (GINS1 antibody) at dilution of 1:4000 incubated at room temperature for 1.5 hours. This data was developed using the same antibody clone with 16061-1-PBS in a different storage buffer formulation.



Various lysates were subjected to SDS PAGE followed by western blot with 16061-1-AP (GINS1 antibody) at dilution of 1:1000 incubated at room temperature for 1.5 hours. This data was developed using the same antibody clone with 16061-1-PBS in a different storage buffer formulation.



Immunohistochemical analysis of paraffin-embedded human ovary cancer tissue slide using 16061-1-AP (GINS1 antibody) at dilution of 1:200 (under 20x lens). Heat mediated antigen retrieval with Tris-EDTA buffer (pH 9.0). This data was developed using the same antibody clone with 16061-1-PBS in a different storage buffer formulation.