

For Research Use Only

# CPNE4 Polyclonal antibody

Catalog Number: 16075-1-AP



## Basic Information

### Catalog Number:

16075-1-AP

### Size:

150ul, Concentration: 400 ug/ml by Nanodrop;

### Source:

Rabbit

### Isotype:

IgG

### Immunogen Catalog Number:

AG9037

### GenBank Accession Number:

BC014396

### GeneID (NCBI):

131034

### UNIPROT ID:

Q96A23

### Full Name:

copine IV

### Calculated MW:

557 aa, 62 kDa

### Observed MW:

62 kDa

### Purification Method:

Antigen affinity purification

### Recommended Dilutions:

WB 1:500-1:3000

IF/ICC 1:200-1:800

## Applications

### Tested Applications:

WB, IF/ICC, ELISA

### Species Specificity:

human, mouse, rat

### Positive Controls:

WB : mouse brain tissue, rat brain tissue

IF/ICC : A549 cells,

## Background Information

Copines are a family of evolutionarily conserved calcium-dependent phospholipid-binding proteins (PMID: 9430674). They contain two Ca<sup>2+</sup>- and phospholipid-binding domains known as C2 domains. Copines are potentially involved in regulating membrane trafficking and in protein-protein interactions. CPNE4 (Copine 4) belongs to the copine family. This antibody is specific to CPNE4.

## Storage

### Storage:

Store at -20°C. Stable for one year after shipment.

### Storage Buffer:

PBS with 0.02% sodium azide and 50% glycerol pH 7.3.

Aliquoting is unnecessary for -20°C storage

\*\*\* 20ul sizes contain 0.1% BSA

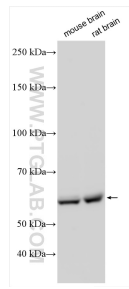
For technical support and original validation data for this product please contact:

T: 1 (888) 4PTGLAB (1-888-478-4522) (toll free in USA), or 1(312) 455-8498 (outside USA)

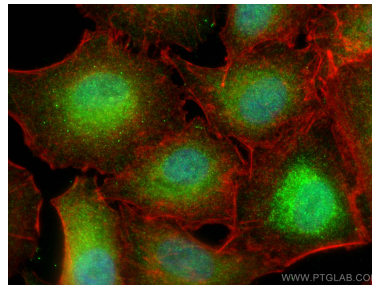
E: [proteintech@ptglab.com](mailto:proteintech@ptglab.com)  
W: [ptglab.com](http://ptglab.com)

This product is exclusively available under Proteintech Group brand and is not available to purchase from any other manufacturer.

## Selected Validation Data



Various lysates were subjected to SDS PAGE followed by western blot with 16075-1-AP (CPNE4 antibody) at dilution of 1:1500 incubated at room temperature for 1.5 hours.



Immunofluorescent analysis of (4% PFA) fixed A549 cells using CPNE4 antibody (16075-1-AP) at dilution of 1:400 and CoraLite®488-Conjugated Goat Anti-Rabbit IgG(H+L), CL594-phalloidin (red).