

For Research Use Only

XRCC6BP1 Polyclonal antibody

Catalog Number: 16076-1-AP



Basic Information

Catalog Number:

16076-1-AP

Size:

150ul , Concentration: 600 ug/ml by Nanodrop and 333 ug/ml by Bradford method using BSA as the standard;

Source:

Rabbit

Isotype:

IgG

Immunogen Catalog Number:

AG9042

GenBank Accession Number:

BC012776

GeneID (NCBI):

91419

UNIPROT ID:

Q9Y6H3

Full Name:

XRCC6 binding protein 1

Calculated MW:

246 aa, 28 kDa

Observed MW:

28 kDa

Purification Method:

Antigen affinity purification

Recommended Dilutions:

WB 1:500-1:3000

Applications

Tested Applications:

WB, ELISA

Species Specificity:

human

Positive Controls:

WB : K-562 cells, HepG2 cells

Storage

Storage:

Store at -20°C. Stable for one year after shipment.

Storage Buffer:

PBS with 0.02% sodium azide and 50% glycerol pH 7.3.

Aliquoting is unnecessary for -20°C storage

*** 20ul sizes contain 0.1% BSA

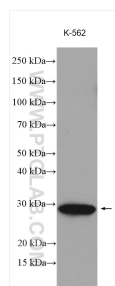
For technical support and original validation data for this product please contact:

T: 1 (888) 4PTGLAB (1-888-478-4522) (toll free in USA), or 1(312) 455-8498 (outside USA)

E: proteintech@ptglab.com
W: ptglab.com

This product is exclusively available under Proteintech Group brand and is not available to purchase from any other manufacturer.

Selected Validation Data



K-562 cells were subjected to SDS PAGE followed by western blot with 16076-1-AP (XRCC6BP1 antibody) at dilution of 1:1500 incubated at room temperature for 1.5 hours.