

For Research Use Only

TCN1 Polyclonal antibody

Catalog Number: 16078-1-AP



Basic Information

Catalog Number: 16078-1-AP	GenBank Accession Number: BC018632	Purification Method: Antigen affinity purification
Size: 150ul, Concentration: 133 µg/ml by Nanodrop and 133 µg/ml by Bradford method using BSA as the standard;	GeneID (NCBI): 6947	Recommended Dilutions: WB 1:1000-1:4000 IHC 1:20-1:200
Source: Rabbit	Full Name: transcobalamin I (vitamin B12 binding protein, R binder family)	
Isotype: IgG	Calculated MW: 433 aa, 48 kDa	
Immunogen Catalog Number: AG9072	Observed MW: 65-70 kDa	

Applications

Tested Applications:

IHC, WB, ELISA

Species Specificity:

human

Note-IHC: suggested antigen retrieval with TE buffer pH 9.0; (*) Alternatively, antigen retrieval may be performed with citrate buffer pH 6.0

Positive Controls:

WB: human saliva tissue,

IHC: human testis tissue, human tonsillitis tissue

Background Information

Storage

Storage:

Store at -20°C. Stable for one year after shipment.

Storage Buffer:

PBS with 0.02% sodium azide and 50% glycerol pH 7.3.

Aliquoting is unnecessary for -20°C storage

*** 20ul sizes contain 0.1% BSA

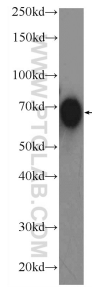
For technical support and original validation data for this product please contact:

T: 1 (888) 4PTGLAB (1-888-478-4522) (toll free in USA), or 1(312) 455-8498 (outside USA)

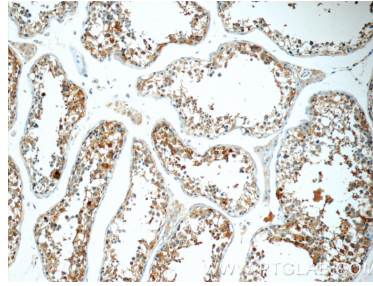
E: proteintech@ptglab.com
W: ptglab.com

This product is exclusively available under Proteintech Group brand and is not available to purchase from any other manufacturer.

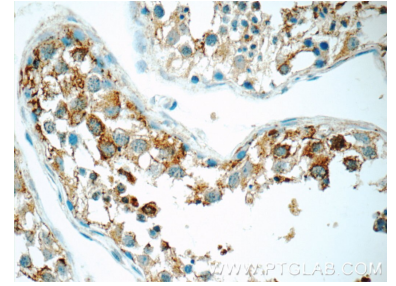
Selected Validation Data



human saliva were subjected to SDS PAGE followed by western blot with 16078-1-AP (TCN1 Antibody) at dilution of 1:2000 incubated at 4 degree celsius over night.



Immunohistochemical analysis of paraffin-embedded human testis tissue slide using 16078-1-AP (TCN1 Antibody) at dilution of 1:50 (under 10x lens).



Immunohistochemical analysis of paraffin-embedded human testis tissue slide using 16078-1-AP (TCN1 Antibody) at dilution of 1:50 (under 40x lens).