

For Research Use Only

NOL9 Polyclonal antibody

Catalog Number: 16083-1-AP **2 Publications**



Basic Information

Catalog Number: 16083-1-AP	GenBank Accession Number: BC009257	Purification Method: Antigen affinity purification
Size: 150ul , Concentration: 350 µg/ml by Nanodrop and 227 µg/ml by Bradford method using BSA as the standard;	GeneID (NCBI): 79707	Recommended Dilutions: WB 1:500-1:2000
Source: Rabbit	Full Name: nucleolar protein 9	
Isotype: IgG	Calculated MW: 702 aa, 79 kDa	
Immunogen Catalog Number: AG9082	Observed MW: 79 kDa	

Applications

Tested Applications: WB,ELISA	Positive Controls: WB : HEK-293 cells, HepG2 cells, PC-3 cells
Cited Applications: FRAP, IF, WB	
Species Specificity: human	
Cited Species: human	

Background Information

NOL9, also named as Polynucleotide 5'-hydroxyl-kinase NOL9, is a 702 amino acid protein, which belongs to the Clp1 family. NOL9 localizes in the nucleus and as a polynucleotide 5'-kinase is involved in rRNA processing. its polynucleotide kinase activity is required for efficient generation of the 5.8S and 28S rRNAs from the 32S precursor.

Notable Publications

Author	Pubmed ID	Journal	Application
Witold Szafarski	34928368	Nucleic Acids Res	FRAP
Castle Christopher D CD	22190735	Mol Biol Cell	WB,IF

Storage

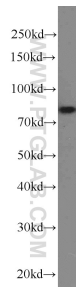
Storage:
Store at -20°C. Stable for one year after shipment.
Storage Buffer:
PBS with 0.02% sodium azide and 50% glycerol pH 7.3.
Aliquoting is unnecessary for -20°C storage

*** 20ul sizes contain 0.1% BSA

For technical support and original validation data for this product please contact:
T: 1 (888) 4PTGLAB (1-888-478-4522) (toll free in USA), or 1(312) 455-8498 (outside USA) E: proteintech@ptglab.com W: ptglab.com

This product is exclusively available under Proteintech Group brand and is not available to purchase from any other manufacturer.

Selected Validation Data



HEK-293 cells were subjected to SDS PAGE followed by western blot with 16083-1-AP (NOL9 antibody) at dilution of 1:1000 incubated at room temperature for 1.5 hours.