

For Research Use Only

# GNB2 Polyclonal antibody

Catalog Number: 16090-1-AP

2 Publications



## Basic Information

<b>Catalog Number:</b> 16090-1-AP	<b>GenBank Accession Number:</b> BC010073	<b>Purification Method:</b> Antigen affinity purification
<b>Size:</b> 150ul , Concentration: 350 ug/ml by Nanodrop and 187 ug/ml by Bradford method using BSA as the standard;	<b>GeneID (NCBI):</b> 2783	<b>Recommended Dilutions:</b> WB 1:500-1:2000
<b>Source:</b> Rabbit	<b>UNIPROT ID:</b> P62879	<b>IHC 1:20-1:200</b>
<b>Isotype:</b> IgG	<b>Full Name:</b> guanine nucleotide binding protein (G protein), beta polypeptide 2	<b>IF/ICC 1:200-1:800</b>
<b>Immunogen Catalog Number:</b> AG9125	<b>Calculated MW:</b> 340 aa, 37 kDa	
	<b>Observed MW:</b> 37 kDa	

## Applications

<b>Tested Applications:</b> WB, IHC, IF/ICC, ELISA	<b>Positive Controls:</b> WB : HeLa cells, HEK-293 cells, Jurkat cells
<b>Cited Applications:</b> WB	<b>IHC :</b> human ovary tumor tissue,
<b>Species Specificity:</b> human, mouse	<b>IF/ICC :</b> HeLa cells, HepG2 cells
<b>Cited Species:</b> human, mouse	
<b>Note-IHC: suggested antigen retrieval with TE buffer pH 9.0; (*) Alternatively, antigen retrieval may be performed with citrate buffer pH 6.0</b>	

## Background Information

GNB2(Guanine nucleotide-binding protein G(I)/G(S)/G(T) subunit beta-2) is also named as G protein subunit beta-2, transducin beta chain 2 and belongs to the WD repeat G protein beta family. G proteins are involved as a modulator or transducer in various transmembrane signaling systems. The beta and gamma chains are required for the GTPase activity, for replacement of GDP by GTP, and for G protein-effector interaction.

## Notable Publications

Author	Pubmed ID	Journal	Application
Yue Zheng	35845072	Front Cardiovasc Med	
Zhong Ding	39008526	PLoS Biol	WB

## Storage

**Storage:**  
Store at -20°C. Stable for one year after shipment.  
**Storage Buffer:**  
PBS with 0.02% sodium azide and 50% glycerol pH 7.3.  
**Aliquoting is unnecessary for -20°C storage**

\*\*\* 20ul sizes contain 0.1% BSA

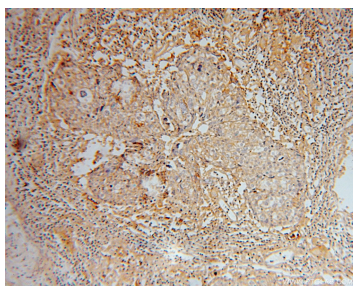
For technical support and original validation data for this product please contact:  
T: 1 (888) 4PTGLAB (1-888-478-4522) (toll free in USA), or 1(312) 455-8498 (outside USA)  
E: proteintech@ptglab.com  
W: ptglab.com

This product is exclusively available under Proteintech Group brand and is not available to purchase from any other manufacturer.

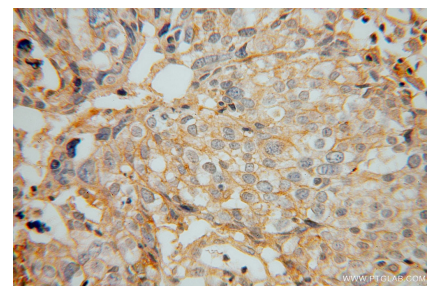
## Selected Validation Data



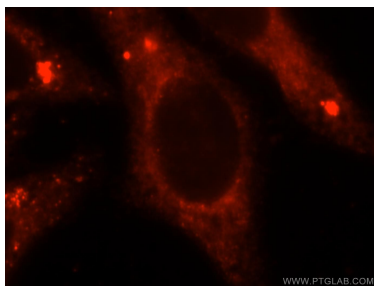
HeLa cells were subjected to SDS PAGE followed by western blot with 16090-1-AP (GNB2 antibody) at dilution of 1:500 incubated at room temperature for 1.5 hours.



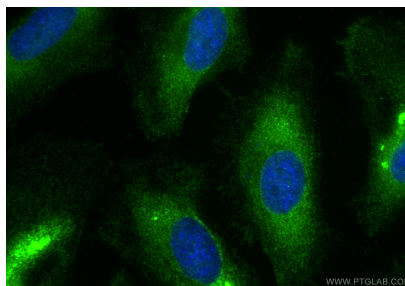
Immunohistochemical analysis of paraffin-embedded human ovary tumor using 16090-1-AP (GNB2 antibody) at dilution of 1:50 (under 10x lens).



Immunohistochemical analysis of paraffin-embedded human ovary tumor using 16090-1-AP (GNB2 antibody) at dilution of 1:50 (under 40x lens).



Immunofluorescent analysis of HepG2 cells, using GNB2 antibody 16090-1-AP at 1:25 dilution and Rhodamine-labeled goat anti-rabbit IgG (red).



Immunofluorescent analysis of (-20°C Ethanol) fixed HeLa cells using GNB2 antibody (16090-1-AP) at dilution of 1:400 and Coralite®488-Conjugated Goat Anti-Rabbit IgG(H+L) (SA00013-2).