

For Research Use Only

GNB2 Polyclonal antibody, PBS Only

Catalog Number:16090-1-PBS



Basic Information

Catalog Number:

16090-1-PBS

Size:

100ug , Concentration: 1 mg/ml by Nanodrop;

Source:

Rabbit

Isotype:

IgG

Immunogen Catalog Number:

AG9125

GenBank Accession Number:

BC010073

GeneID (NCBI):

2783

UNIPROT ID:

P62879

Full Name:

guanine nucleotide binding protein (G protein), beta polypeptide 2

Calculated MW:

340 aa, 37 kDa

Observed MW:

37 kDa

Purification Method:

Antigen affinity purification

Applications

Tested Applications:

WB, IHC, IF/ICC, Indirect ELISA

Species Specificity:

human, mouse

Background Information

GNB2(Guanine nucleotide-binding protein G(I)/G(S)/G(T) subunit beta-2) is also named as G protein subunit beta-2, transducin beta chain 2 and belongs to the WD repeat G protein beta family. G proteins are involved as a modulator or transducer in various transmembrane signaling systems. The beta and gamma chains are required for the GTPase activity, for replacement of GDP by GTP, and for G protein-effector interaction.

Storage

Storage:

Store at -80°C.

Storage Buffer:

PBS Only

For technical support and original validation data for this product please contact:

T: 1 (888) 4PTGLAB (1-888-478-4522) (toll free in USA), or 1(312) 455-8498 (outside USA)

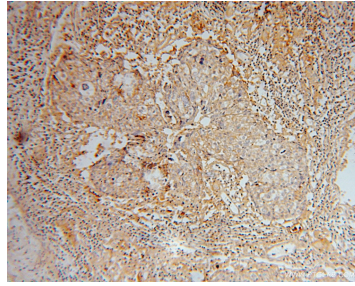
E: proteintech@ptglab.com
W: ptglab.com

This product is exclusively available under Proteintech Group brand and is not available to purchase from any other manufacturer.

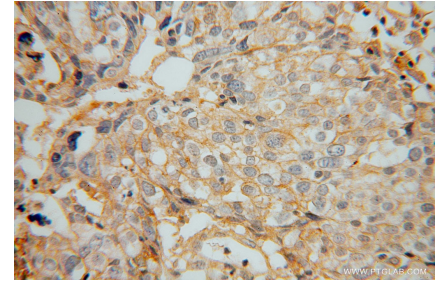
Selected Validation Data



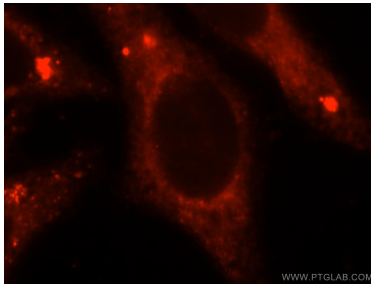
HeLa cells were subjected to SDS PAGE followed by western blot with 16090-1-AP (GNB2 antibody) at dilution of 1:500 incubated at room temperature for 1.5 hours. This data was developed using the same antibody clone with 16090-1-PBS in a different storage buffer formulation.



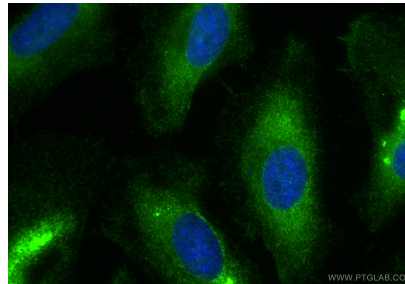
Immunohistochemical analysis of paraffin-embedded human ovary tumor using 16090-1-AP (GNB2 antibody) at dilution of 1:50 (under 10x lens). This data was developed using the same antibody clone with 16090-1-PBS in a different storage buffer formulation.



Immunohistochemical analysis of paraffin-embedded human ovary tumor using 16090-1-AP (GNB2 antibody) at dilution of 1:50 (under 40x lens). This data was developed using the same antibody clone with 16090-1-PBS in a different storage buffer formulation.



Immunofluorescent analysis of HepG2 cells, using GNB2 antibody 16090-1-AP at 1:25 dilution and Rhodamine-labeled goat anti-rabbit IgG (red). This data was developed using the same antibody clone with 16090-1-PBS in a different storage buffer formulation.



Immunofluorescent analysis of (-20°C Ethanol) fixed HeLa cells using GNB2 antibody (16090-1-AP) at dilution of 1:400 and CoraLite®488-Conjugated Goat Anti-Rabbit IgG(H+L) (SA00013-2). This data was developed using the same antibody clone with 16090-1-PBS in a different storage buffer formulation.