

For Research Use Only

POLR2D Polyclonal antibody

Catalog Number: 16093-1-AP **1 Publications**



Basic Information

Catalog Number: 16093-1-AP	GenBank Accession Number: BC017205	Purification Method: Antigen affinity purification
Size: 150ul , Concentration: 500 µg/ml by Nanodrop and 267 µg/ml by Bradford method using BSA as the standard;	GeneID (NCBI): 5433	Recommended Dilutions: WB 1:1000-1:6000
Source: Rabbit	Full Name: polymerase (RNA) II (DNA directed) polypeptide D	IP 0.5-4.0 ug for IP and 1:500-1:1000 for WB
Isotype: IgG	Calculated MW: 142 aa, 16 kDa	
Immunogen Catalog Number: AG8701	Observed MW: 16-20 kDa	

Applications

Tested Applications: IP, WB, ELISA	Positive Controls:
Cited Applications: WB	WB : HeLa cells, rat skeletal muscle tissue, rat liver tissue, HepG2 cells, MCF-7 cells
Species Specificity: human, mouse, rat	IP : mouse heart tissue,
Cited Species: human	

Background Information

Notable Publications

Author	Pubmed ID	Journal	Application
Jiale Du	35451368	Elife	WB

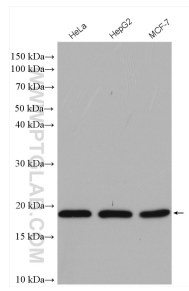
Storage

Storage:
Store at -20°C. Stable for one year after shipment.
Storage Buffer:
PBS with 0.02% sodium azide and 50% glycerol pH 7.3.
Aliquoting is unnecessary for -20°C storage

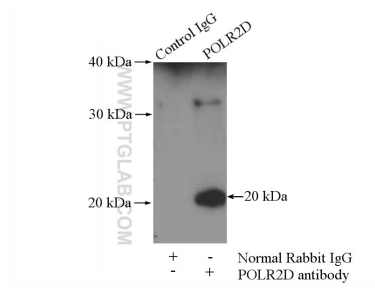
For technical support and original validation data for this product please contact:
T: 1 (888) 4PTGLAB (1-888-478-4522) (toll free in USA), or 1(312) 455-8498 (outside USA)
E: proteintech@ptglab.com
W: ptglab.com

This product is exclusively available under Proteintech Group brand and is not available to purchase from any other manufacturer.

Selected Validation Data



Various lysates were subjected to SDS PAGE followed by western blot with 16093-1-AP (POLR2D antibody) at dilution of 1:3000 incubated at room temperature for 1.5 hours.



IP Result of anti-POLR2D (IP:16093-1-AP, 4ug; Detection:16093-1-AP 1:800) with mouse heart tissue lysate 4000ug.