

For Research Use Only

BRMS1 Polyclonal antibody

Catalog Number: 16096-1-AP

Featured Product

3 Publications



Basic Information

Catalog Number:

16096-1-AP

Size:

150ul, Concentration: 200 ug/ml by Nanodrop and 200 ug/ml by Bradford method using BSA as the standard;

Source:

Rabbit

Isotype:

IgG

Immunogen Catalog Number:

AG8939

GenBank Accession Number:

BC009834

GeneID (NCBI):

25855

UNIPROT ID:

Q9HCU9

Full Name:

breast cancer metastasis suppressor 1

Calculated MW:

246 aa, 28 kDa

Observed MW:

28 kDa

Purification Method:

Antigen affinity purification

Recommended Dilutions:

WB 1:500-1:1000

IHC 1:50-1:500

IF/ICC 1:200-1:800

Applications

Tested Applications:

WB, IHC, IF/ICC, ELISA

Cited Applications:

WB, IP

Species Specificity:

human

Cited Species:

human

Note-IHC: suggested antigen retrieval with TE buffer pH 9.0; (*) Alternatively, antigen retrieval may be performed with citrate buffer pH 6.0

Positive Controls:

WB : MCF-7 cells, HEK-293 cells

IHC : human brain tissue,

IF/ICC : MCF-7 cells,

Background Information

Breast cancer metastasis suppressor 1 (BRMS1) was originally identified as a metastasis suppressor gene in human breast cancer. BRMS1 has since been reported to suppress metastasis in a variety of cancer types such as melanoma, ovarian carcinoma, and non-small lung cancer.

Notable Publications

Author	Pubmed ID	Journal	Application
Jianming Dou	30365131	Oncol Rep	WB,IP
Songyun Zhao	39143438	J Neurooncol	WB
Zhixian Guo	29295726	Oncol Res	WB

Storage

Storage:

Store at -20°C. Stable for one year after shipment.

Storage Buffer:

PBS with 0.02% sodium azide and 50% glycerol pH 7.3.

Aliquoting is unnecessary for -20°C storage

*** 20ul sizes contain 0.1% BSA

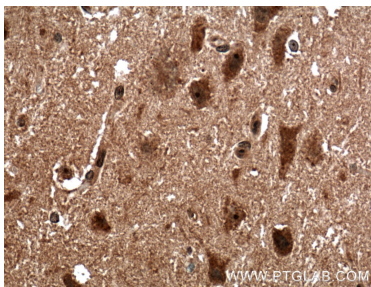
For technical support and original validation data for this product please contact:

T: 1 (888) 4PTGLAB (1-888-478-4522) (toll free in USA), or 1(312) 455-8498 (outside USA)

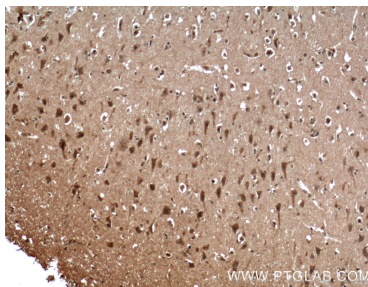
E: proteintech@ptglab.com
W: ptglab.com

This product is exclusively available under Proteintech Group brand and is not available to purchase from any other manufacturer.

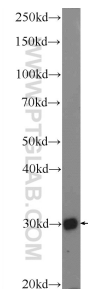
Selected Validation Data



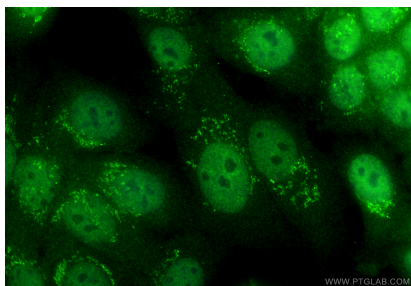
Immunohistochemical analysis of paraffin-embedded human brain tissue slide using 16096-1-AP (BRMS1 antibody) at dilution of 1:200 (under 40x lens). Heat mediated antigen retrieval with Tris-EDTA buffer (pH 9.0).



Immunohistochemical analysis of paraffin-embedded human brain tissue slide using 16096-1-AP (BRMS1 antibody) at dilution of 1:200 (under 10x lens). Heat mediated antigen retrieval with Tris-EDTA buffer (pH 9.0).



MCF-7 cells were subjected to SDS PAGE followed by western blot with 16096-1-AP (BRMS1 Antibody) at dilution of 1:600 incubated at 4 degree celsius over night.



Immunofluorescent analysis of (4% PFA) fixed MCF-7 cells using BRMS1 antibody (16096-1-AP) at dilution of 1:400 and CoraLite® 488-Conjugated Goat Anti-Rabbit IgG(H+L) (SA00013-2).