

For Research Use Only

CGRRF1 Polyclonal antibody

Catalog Number: 16101-1-AP



Basic Information

Catalog Number: 16101-1-AP	GenBank Accession Number: BC015063	Purification Method: Antigen affinity purification
Size: 150ul , Concentration: 260 µg/ml by Nanodrop and 267 µg/ml by Bradford method using BSA as the standard;	GeneID (NCBI): 10668	Recommended Dilutions: WB 1:500-1:1000
Source: Rabbit	Full Name: cell growth regulator with ring finger domain 1	
Isotype: IgG	Calculated MW: 332 aa, 38 kDa	
Immunogen Catalog Number: AG8998	Observed MW: 42-48 kDa	

Applications

Tested Applications: WB,ELISA	Positive Controls: WB : rat kidney tissue, L02 cells
Species Specificity: human, rat	

Background Information

CGRRF1 is a growth suppressor and consists of a transmembrane domain and a RING-finger domain. It functions as a RING domain E3 ubiquitin ligase involved in endoplasmic reticulum-associated degradation. The expression of CGRRF1 is decreased in cancer tissues.(PMID: 31801577).

Storage

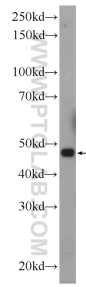
Storage:
Store at -20°C. Stable for one year after shipment.
Storage Buffer:
PBS with 0.02% sodium azide and 50% glycerol pH 7.3.
Aliquoting is unnecessary for -20°C storage

*** 20ul sizes contain 0.1% BSA

For technical support and original validation data for this product please contact:
T: 1 (888) 4PTGLAB (1-888-478-4522) (toll free in USA), or 1(312) 455-8498 (outside USA) E: proteintech@ptglab.com W: ptglab.com

This product is exclusively available under Proteintech Group brand and is not available to purchase from any other manufacturer.

Selected Validation Data



rat kidney tissue were subjected to SDS PAGE followed by western blot with 16101-1-AP (CGRF1 Antibody) at dilution of 1:600 incubated at room temperature for 1.5 hours.