

For Research Use Only

CGRRF1 Polyclonal antibody, PBS Only

Catalog Number: 16101-1-PBS



Basic Information

Catalog Number:

16101-1-PBS

Size:

100ug, Concentration: 1 mg/ml by Nanodrop;

Source:

Rabbit

Isotype:

IgG

Immunogen Catalog Number:

AG8998

GenBank Accession Number:

BC015063

GeneID (NCBI):

10668

UNIPROT ID:

Q99675

Full Name:

cell growth regulator with ring finger domain 1

Calculated MW:

332 aa, 38 kDa

Observed MW:

42-48 kDa

Purification Method:

Antigen affinity purification

Applications

Tested Applications:

WB, Indirect ELISA

Species Specificity:

human, rat

Background Information

CGRRF1 is a growth suppressor and consists of a transmembrane domain and a RING-finger domain. It functions as a RING domain E3 ubiquitin ligase involved in endoplasmic reticulum-associated degradation. The expression of CGRRF1 is decreased in cancer tissues.(PMID: 31801577).

Storage

Storage:

Store at -80°C.

Storage Buffer:

PBS Only

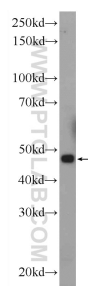
For technical support and original validation data for this product please contact:

T: 1 (888) 4PTGLAB (1-888-478-4522) (toll free in USA), or 1(312) 455-8498 (outside USA)

E: proteintech@ptglab.com
W: ptglab.com

This product is exclusively available under Proteintech Group brand and is not available to purchase from any other manufacturer.

Selected Validation Data



rat kidney tissue were subjected to SDS PAGE followed by western blot with 16101-1-AP (CGRRF1 Antibody) at dilution of 1:600 incubated at room temperature for 1.5 hours. This data was developed using the same antibody clone with 16101-1-PBS in a different storage buffer formulation.